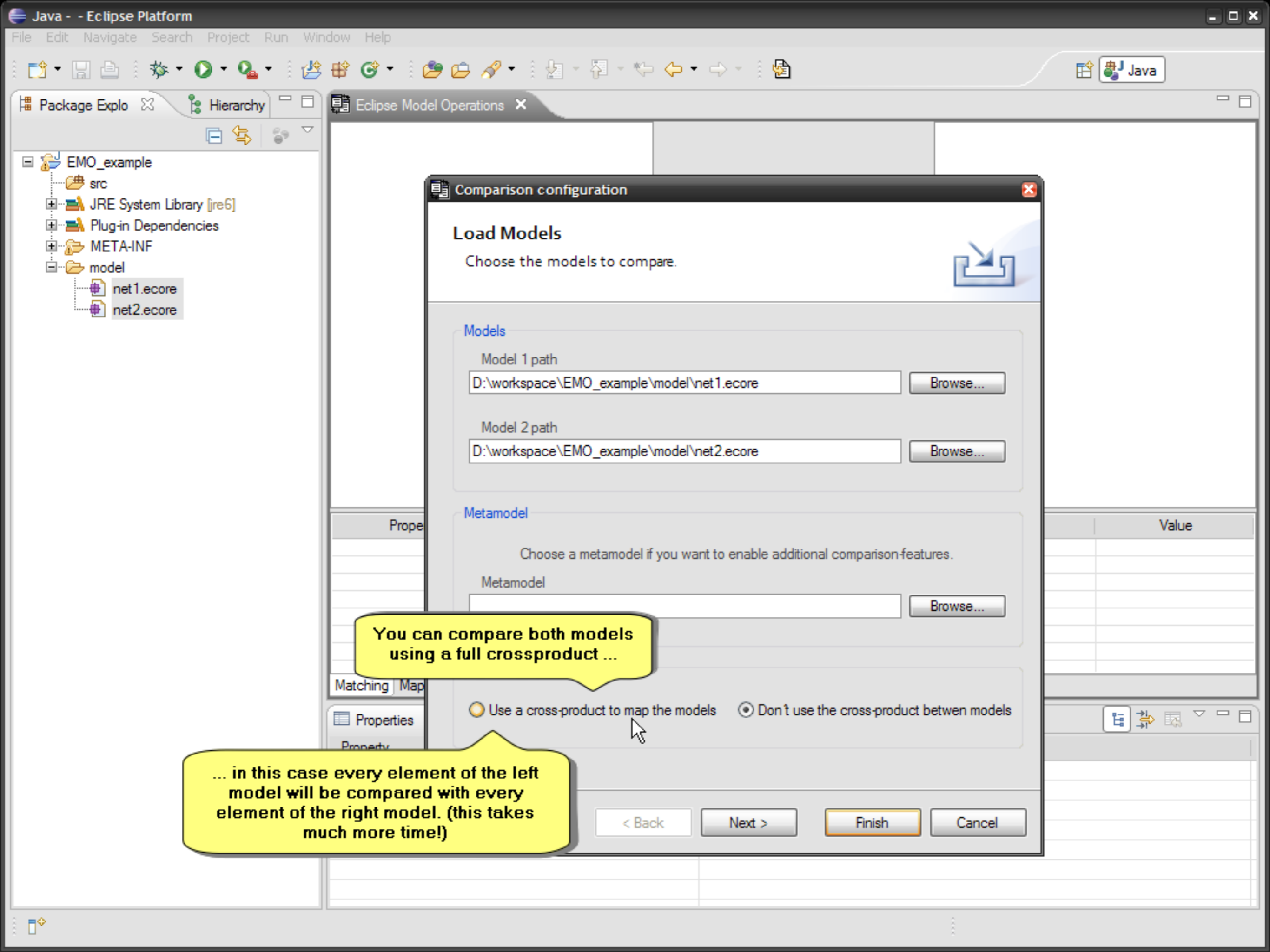


- New
- Open F3
- Show In Alt+Shift+W
- Copy Ctrl+C
- Copy Qualified Name
- Paste Ctrl+V
- Delete Delete
- Remove from Context Ctrl+Alt+Shift+Down
- Mark as Landmark Ctrl+Alt+Shift+Up
- Build Path
- Refactor Alt+Shift+T
- Import...
- Export...
- Refresh F5
- Assign Working Sets...
- Initialize.ecore\_diagram diagram file
- Map to Ecore...
- Initialize Ecore Diagram File...
- Run As
- Debug As
- Team
- Compare With
- Replace With
- Eclipse Model Operations
- Teneo

compare models

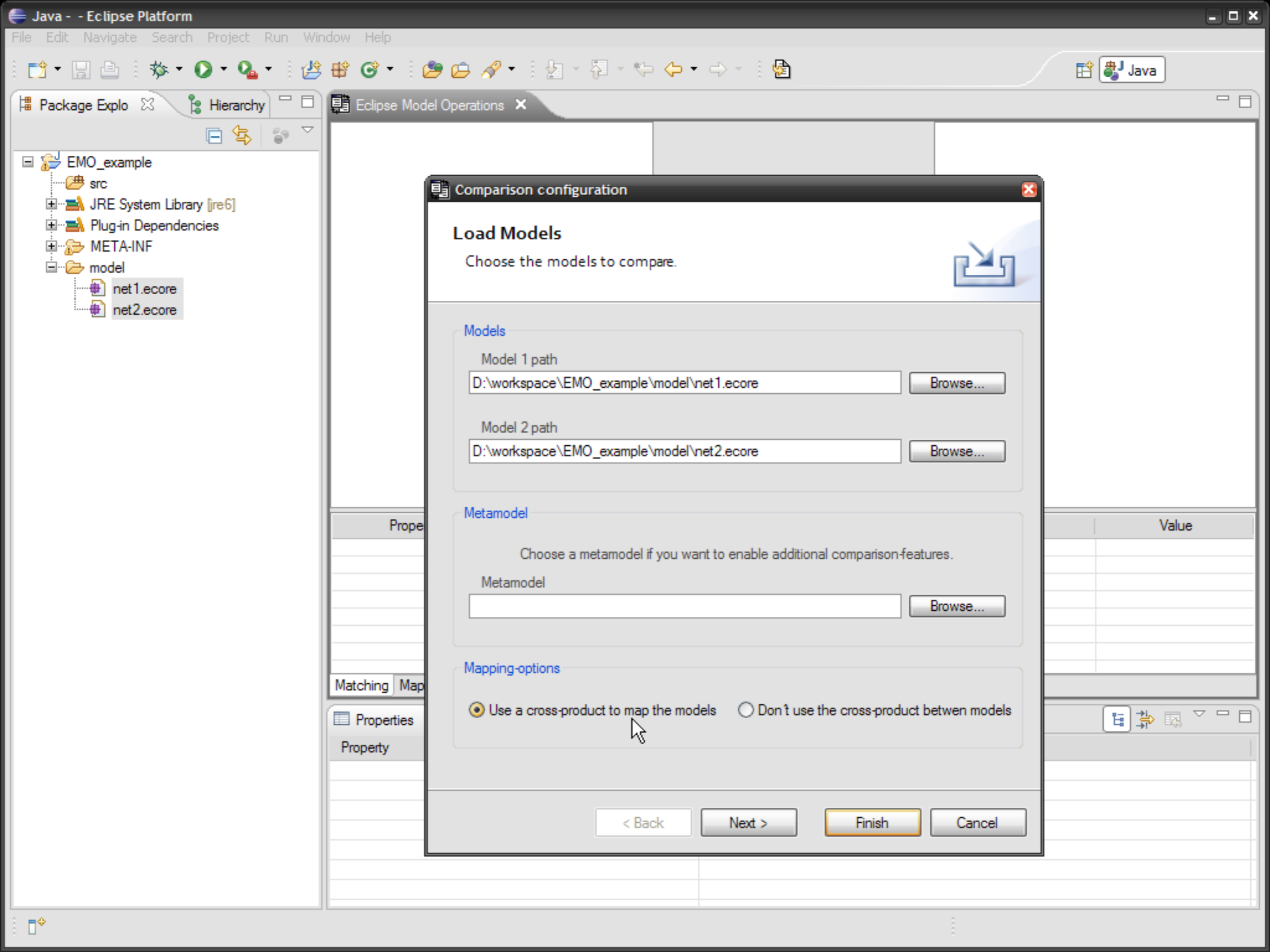


**You can compare both models using a full crossproduct ...**

**... in this case every element of the left model will be compared with every element of the right model. (this takes much more time!)**

Use a cross-product to map the models     Don't use the cross-product between models

< Back    Next >    Finish    Cancel



- EMO\_example
  - src
  - JRE System Library [jre6]
  - Plug-in Dependencies
  - META-INF
  - model
    - net1.ecore
    - net2.ecore

### Comparison configuration

#### Load Models

Choose the models to compare.



#### Models

Model 1 path

D:\workspace\EMO\_example\model\net1.ecore

Browse...

Model 2 path

D:\workspace\EMO\_example\model\net2.ecore

Browse...

#### Metamodel

Choose a metamodel if you want to enable additional comparison features.

Metamodel

Browse...

#### Mapping-options

Use a cross-product to map the models  Don't use the cross-product between models

< Back Next > Finish Cancel

Prope

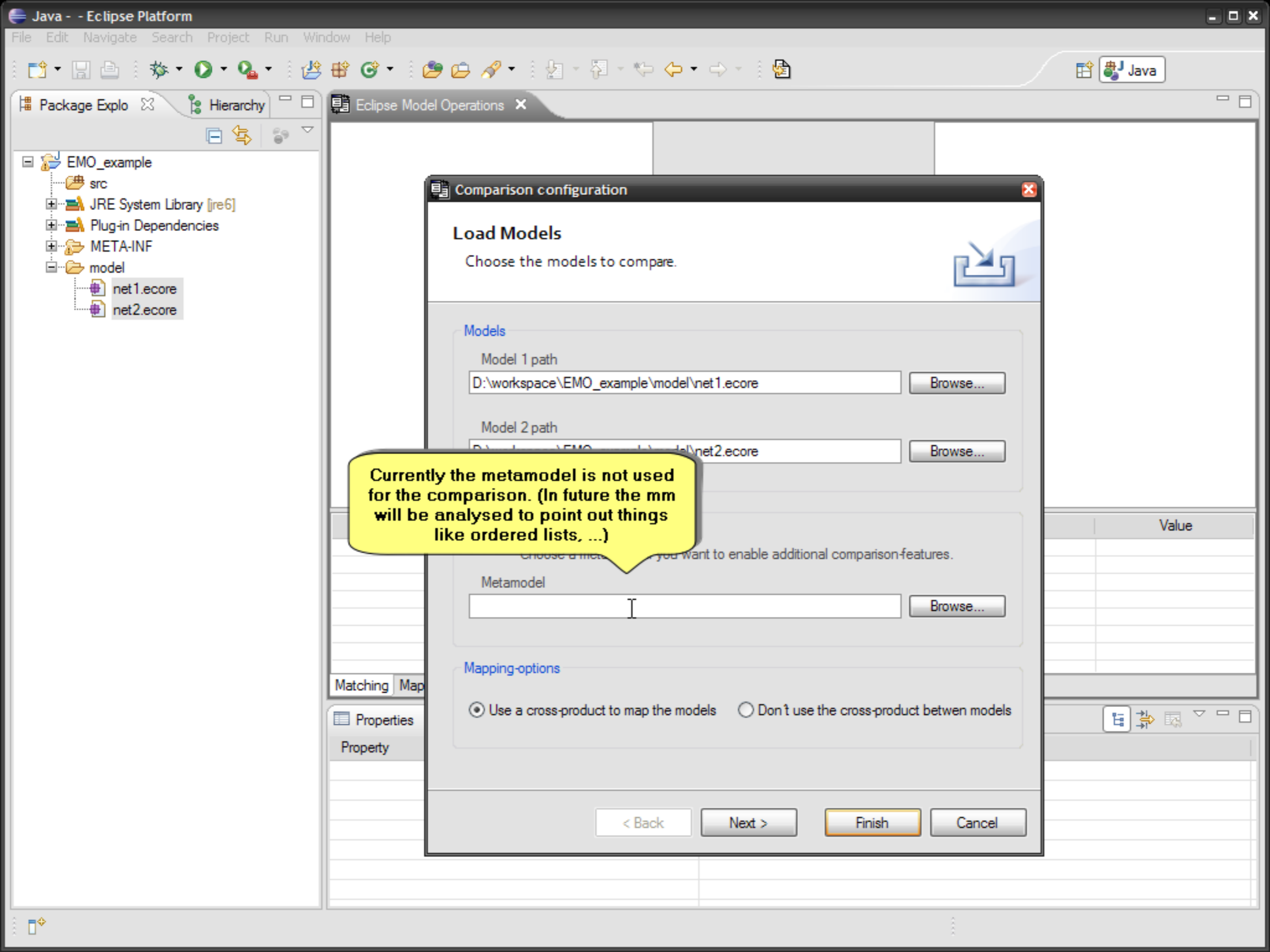
Value

Matching Map

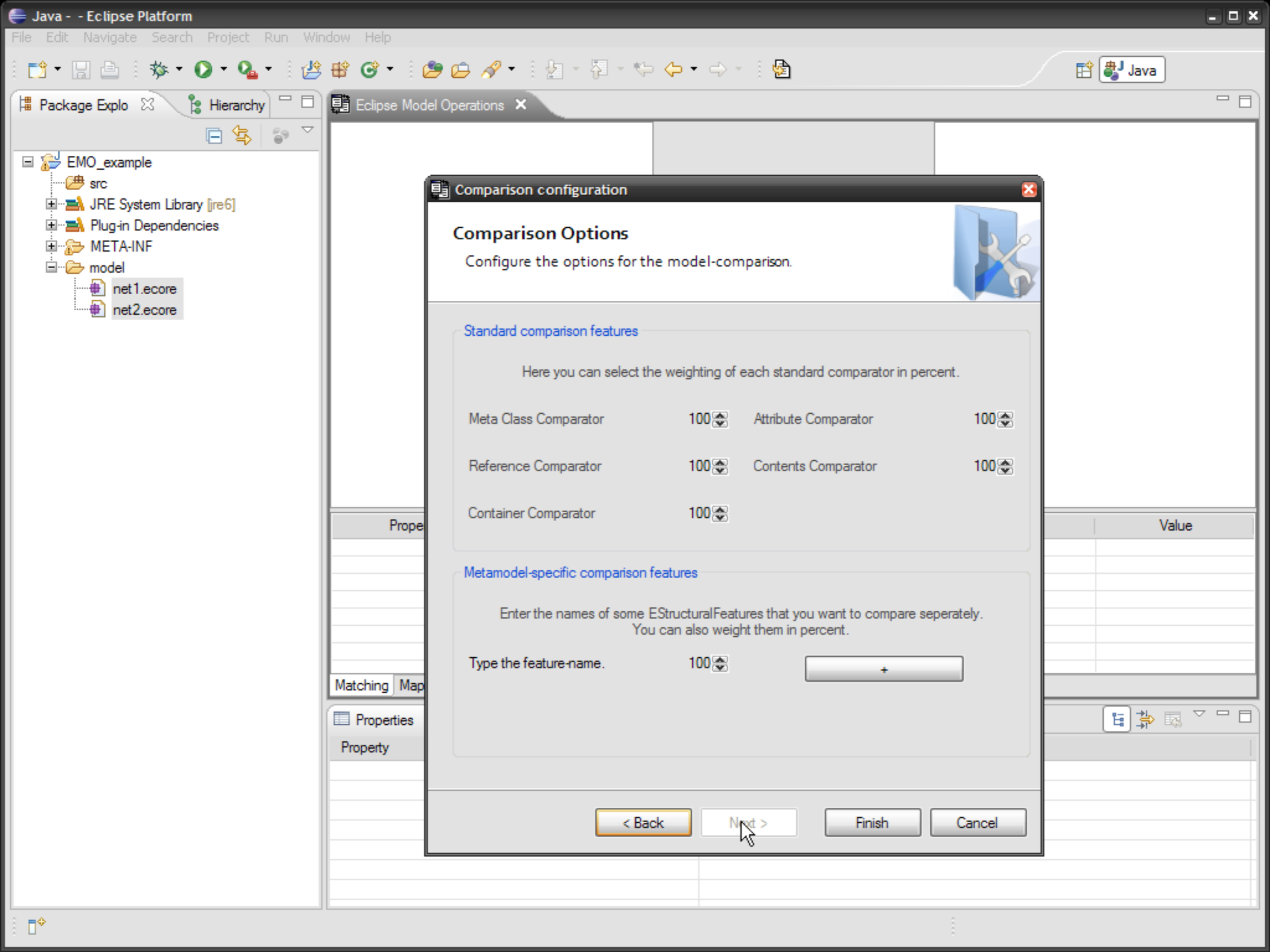
Properties

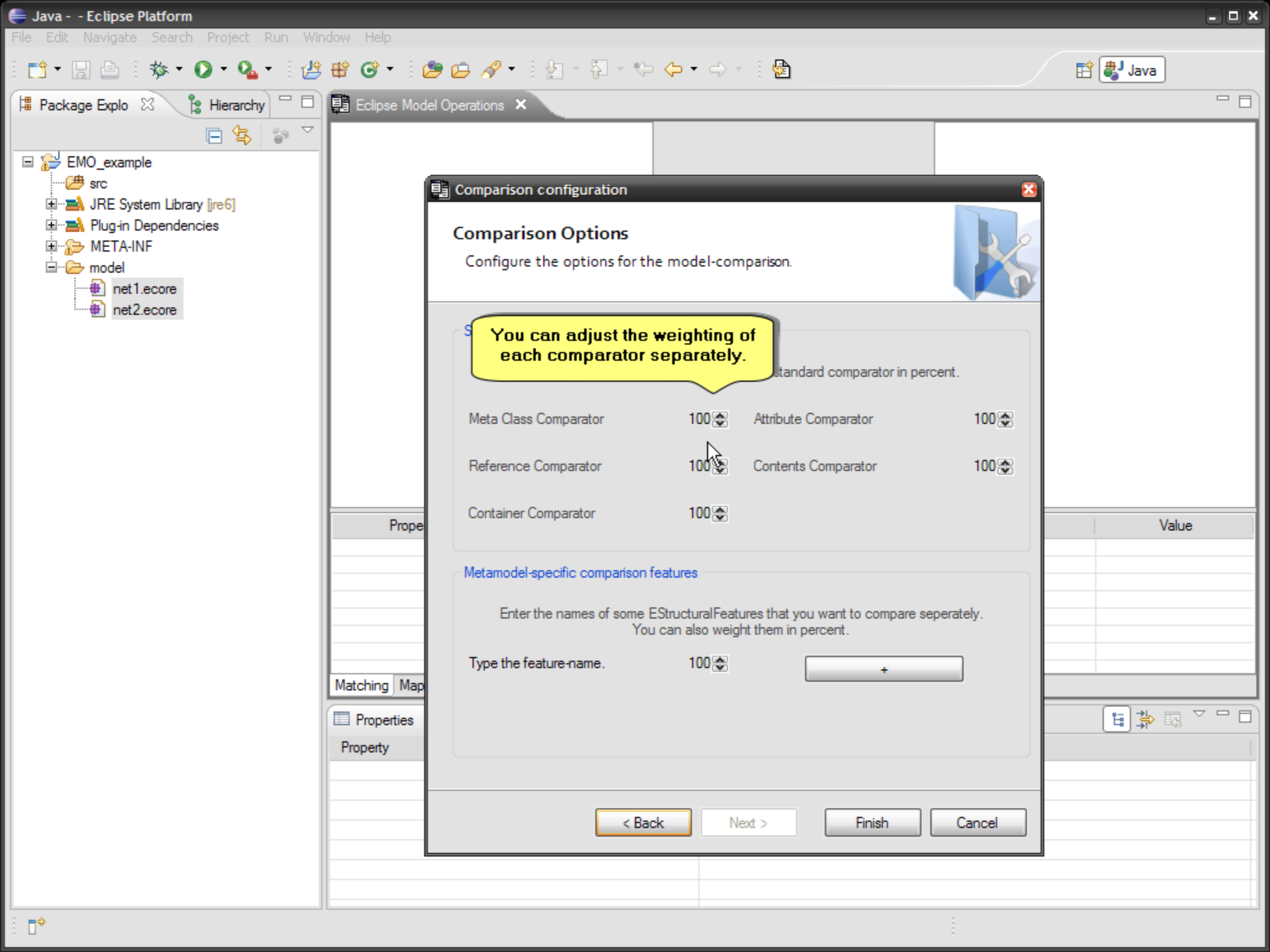
Property





Currently the metamodel is not used for the comparison. (In future the mm will be analysed to point out things like ordered lists, ...)





### Comparison configuration

#### Comparison Options

Configure the options for the model-comparison.

**You can adjust the weighting of each comparator separately.**

Standard comparator in percent.

Meta Class Comparator	100	Attribute Comparator	100
Reference Comparator	100	Contents Comparator	100
Container Comparator	100		

#### Metamodel-specific comparison features

Enter the names of some EStructuralFeatures that you want to compare separately. You can also weight them in percent.

Type the feature-name.      100      +

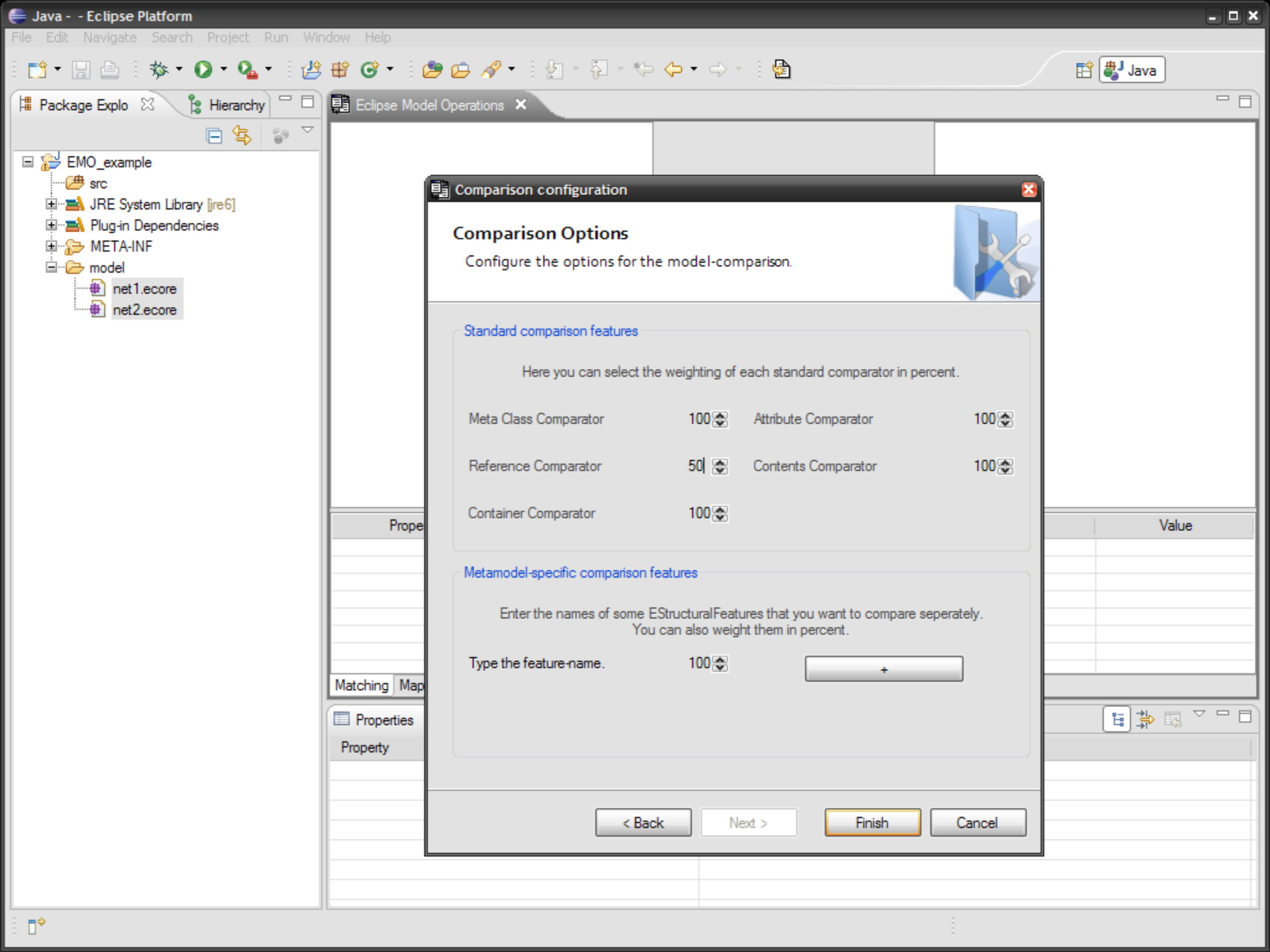
< Back      Next >      Finish      Cancel

Java - Eclipse Platform

File Edit Navigate Search Project Run Window Help

Package Explo Hierarchy

- EMO\_example
  - src
  - JRE System Library [jre6]
  - Plug-in Dependencies
  - META-INF
  - model
    - net1.ecore
    - net2.ecore



### Comparison configuration

#### Comparison Options

Configure the options for the model-comparison.

##### Standard comparison features

Here you can select the weighting of each standard comparator in percent.

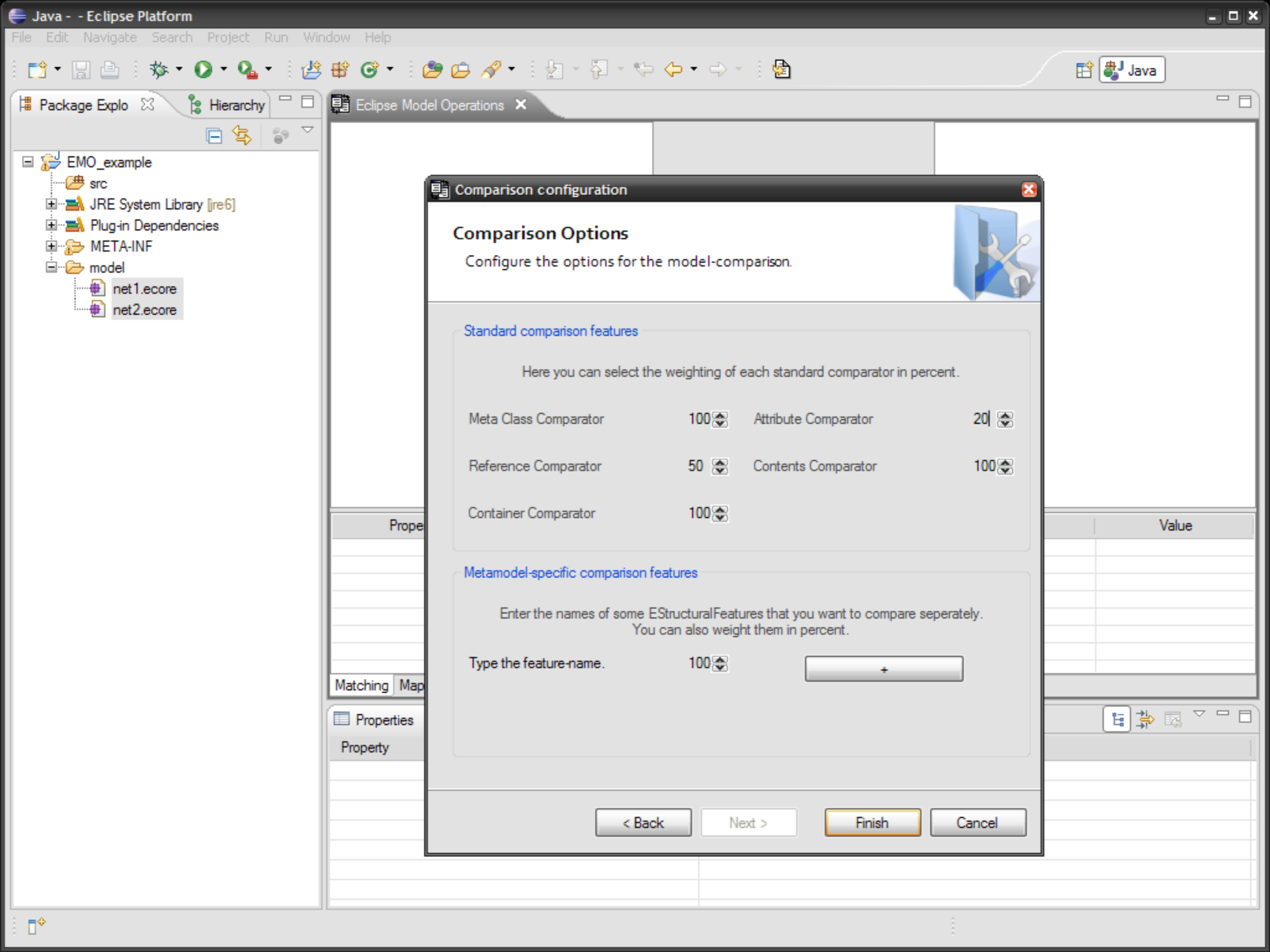
Meta Class Comparator	100	Attribute Comparator	100
Reference Comparator	50	Contents Comparator	100
Container Comparator	100		

##### Metamodel-specific comparison features

Enter the names of some EStructuralFeatures that you want to compare separately. You can also weight them in percent.

Type the feature-name.      100      +

< Back      Next >      Finish      Cancel



### Comparison configuration

#### Comparison Options

Configure the options for the model-comparison.

##### Standard comparison features

Here you can select the weighting of each standard comparator in percent.

Meta Class Comparator	100	Attribute Comparator	20
Reference Comparator	50	Contents Comparator	100
Container Comparator	100		

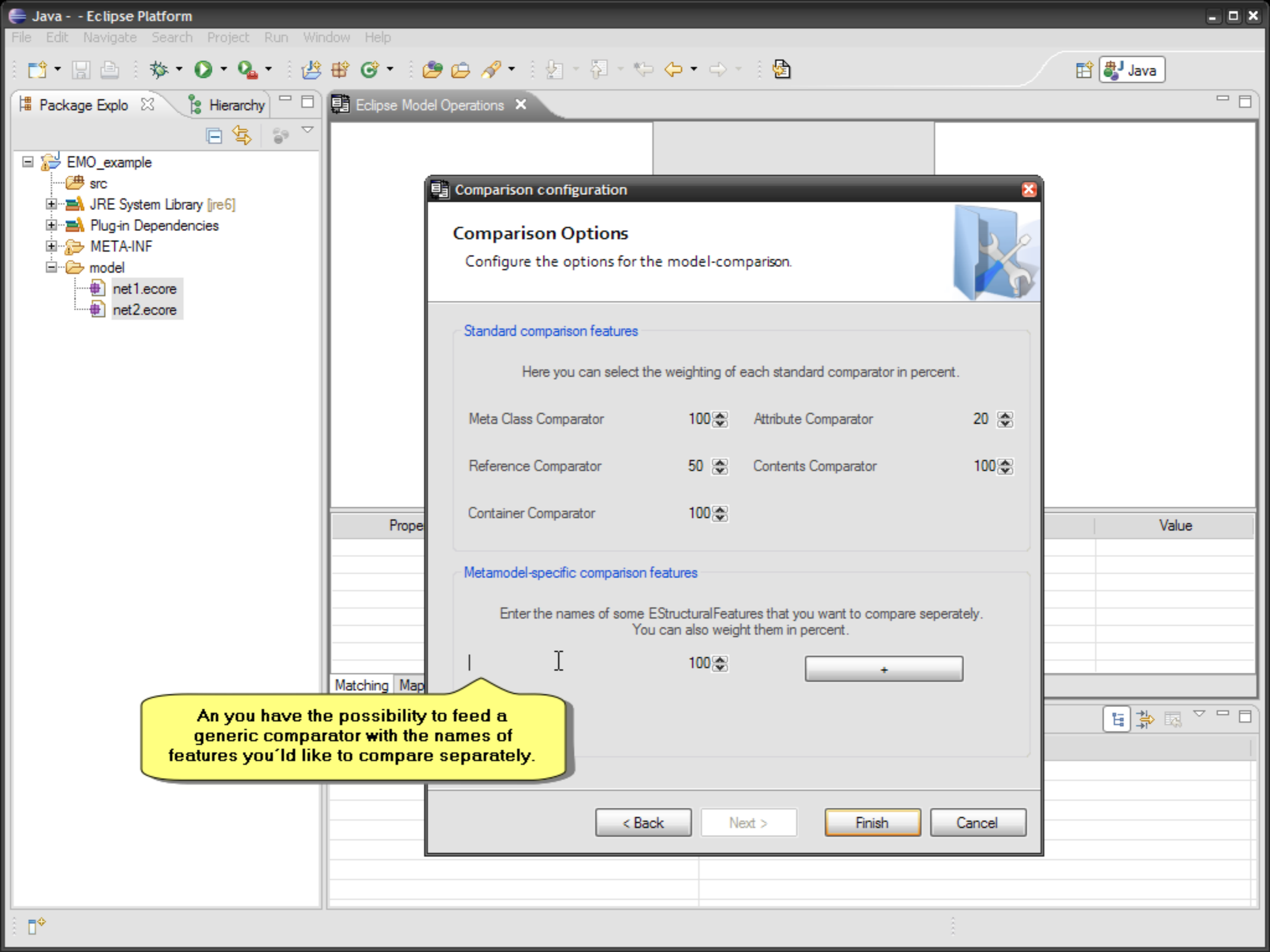
##### Metamodel-specific comparison features

Enter the names of some EStructuralFeatures that you want to compare seperately. You can also weight them in percent.

Type the feature-name.      100      +

< Back      Next >      Finish      Cancel





- EMO\_example
  - src
  - JRE System Library [jre6]
  - Plug-in Dependencies
  - META-INF
  - model
    - net1.ecore
    - net2.ecore

### Comparison configuration

#### Comparison Options

Configure the options for the model-comparison.

**Standard comparison features**

Here you can select the weighting of each standard comparator in percent.

Meta Class Comparator	100	Attribute Comparator	20
Reference Comparator	50	Contents Comparator	100
Container Comparator	100		

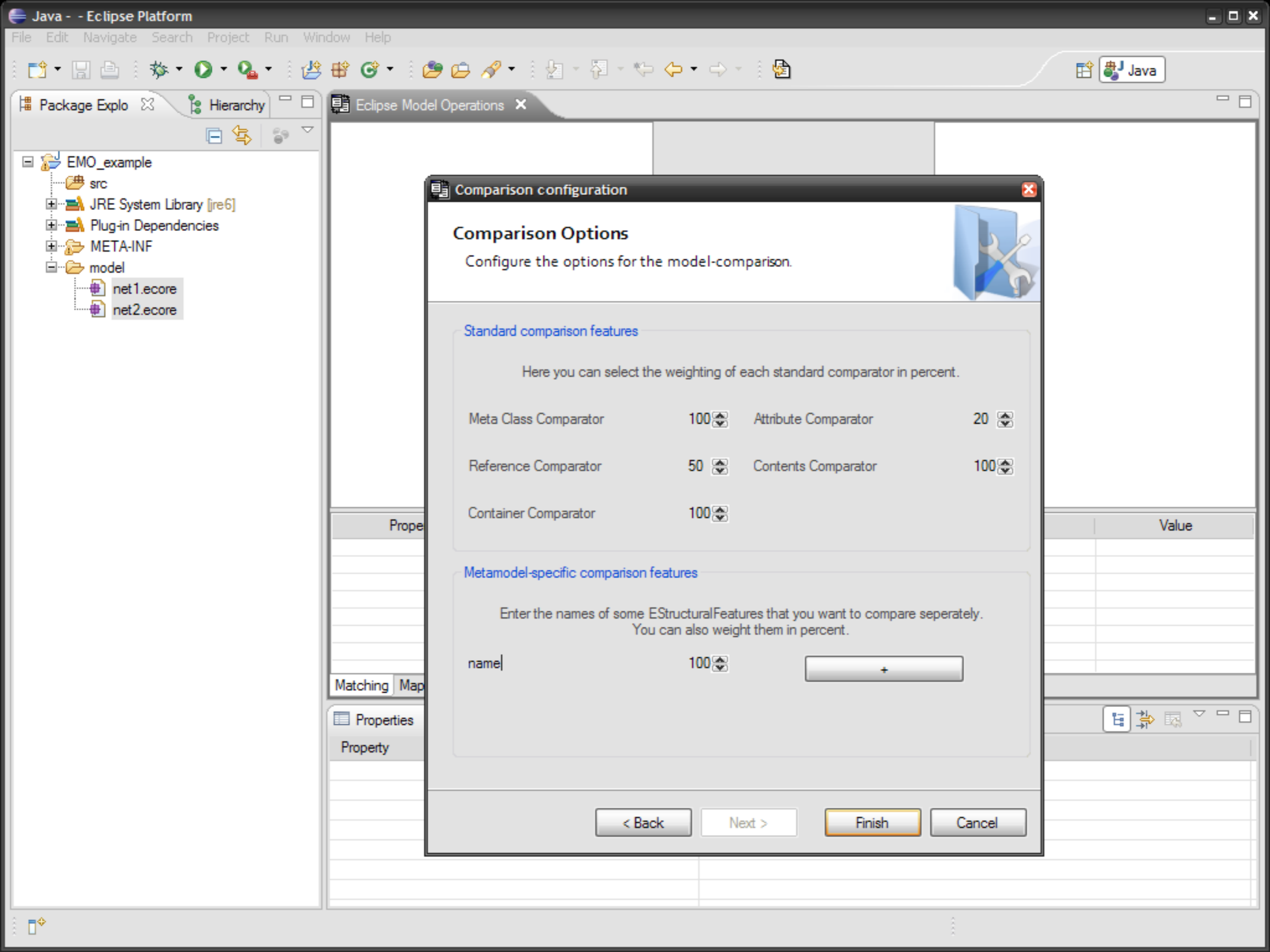
**Metamodel-specific comparison features**

Enter the names of some EStructuralFeatures that you want to compare seperately. You can also weight them in percent.

		100	+
--	--	-----	---

< Back   Next >   Finish   Cancel

An you have the possibility to feed a generic comparator with the names of features you'd like to compare separately.



### Comparison configuration

#### Comparison Options

Configure the options for the model-comparison.

##### Standard comparison features

Here you can select the weighting of each standard comparator in percent.

Meta Class Comparator	100	Attribute Comparator	20
Reference Comparator	50	Contents Comparator	100
Container Comparator	100		

##### Metamodel-specific comparison features

Enter the names of some EStructuralFeatures that you want to compare seperately. You can also weight them in percent.

name	100	+
------	-----	---

< Back    Next >    Finish    Cancel



Package Explor Hierarchy

- EMO\_example
  - src
  - JRE System Library [jre6]
  - Plug-in Dependencies
  - META-INF
  - model
    - net1.ecore
    - net2.ecore

Eclipse Model Operations

D:\workspace\EMO\_example\model\net1

### Comparison configuration

#### Comparison Options

Configure the options for the model-comparison.

**Standard comparison features**

Here you can select the weighting of each standard comparator in percent.

Meta Class Comparator	100	Attribute Comparator	20
Reference Comparator	50	Contents Comparator	100
Container Comparator	100		

**Metamodel-specific comparison features**

Enter the names of some EStructuralFeatures that you want to compare separately.  
You can also weight them in percent.

name	100	+ [button]
------	-----	------------

< Back    Next >    Finish    Cancel













