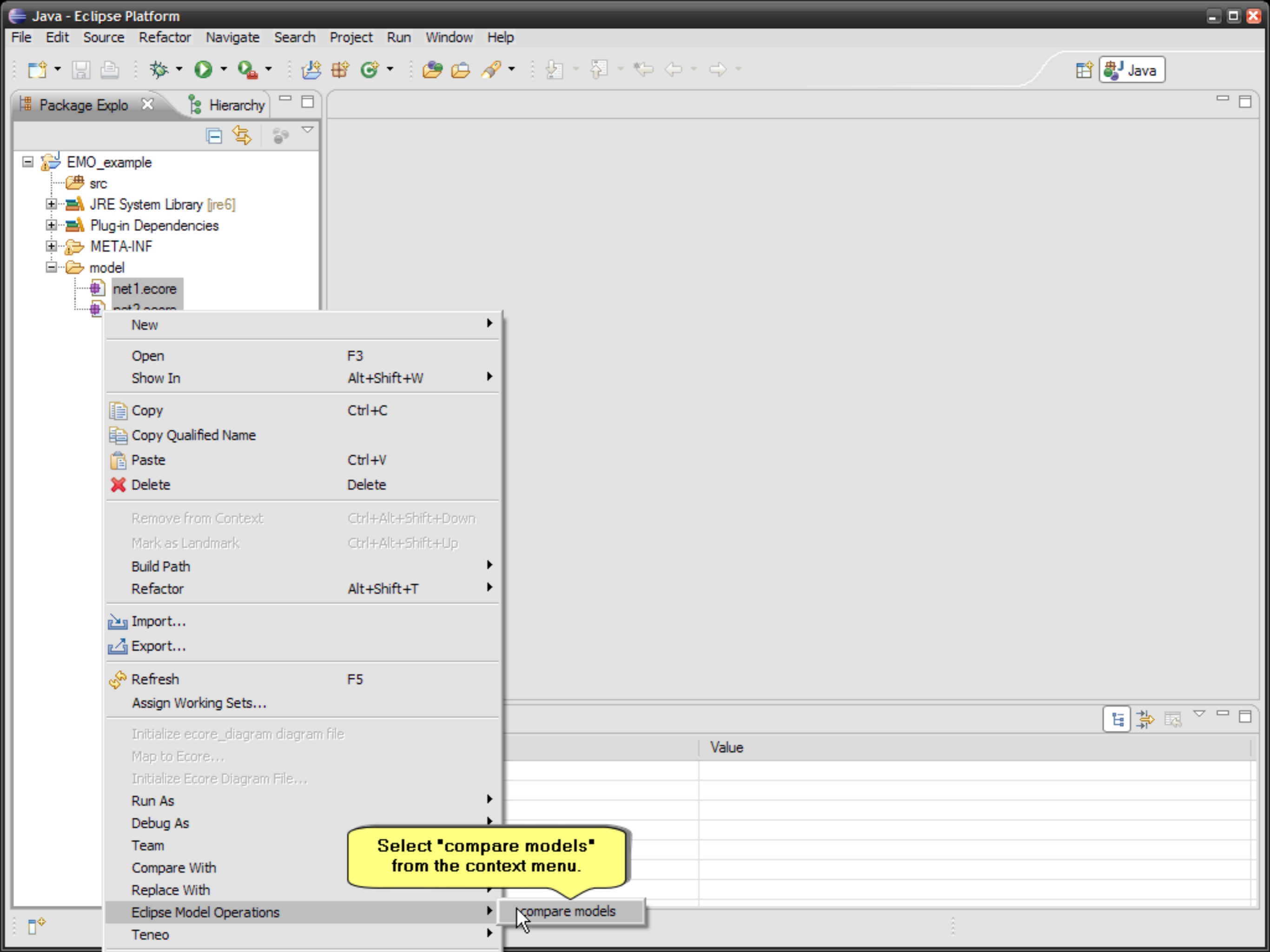


Select the two models we want to compare.

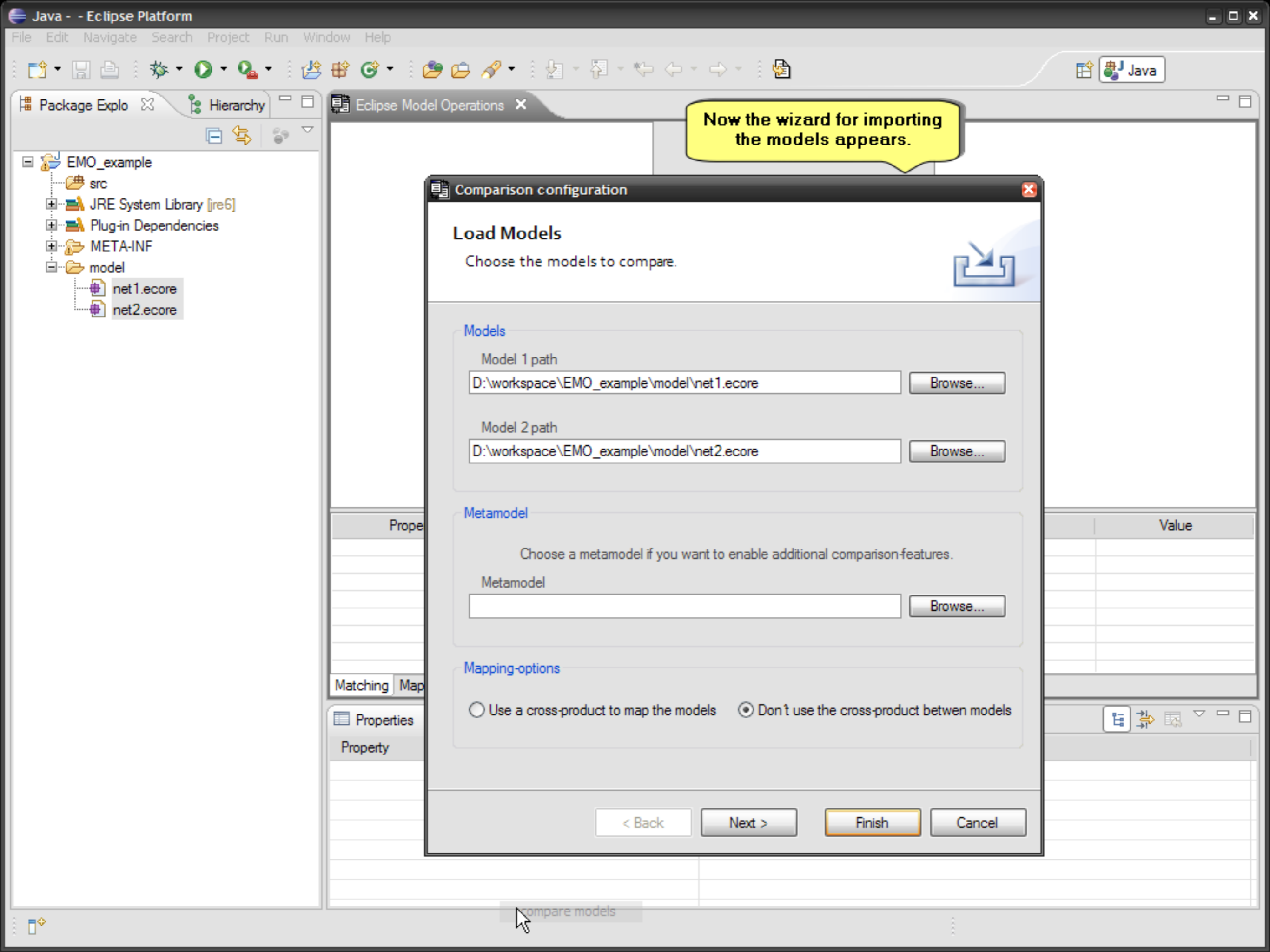
Property	Value

2 items selected



Select "compare models" from the context menu.

compare models



Now the wizard for importing the models appears.

### Comparison configuration

#### Load Models

Choose the models to compare.

**Models**

Model 1 path  
D:\workspace\EMO\_example\model\net1.ecore

Model 2 path  
D:\workspace\EMO\_example\model\net2.ecore

**Metamodel**

Choose a metamodel if you want to enable additional comparison features.

Metamodel

**Mapping-options**

Use a cross-product to map the models     Don't use the cross-product between models

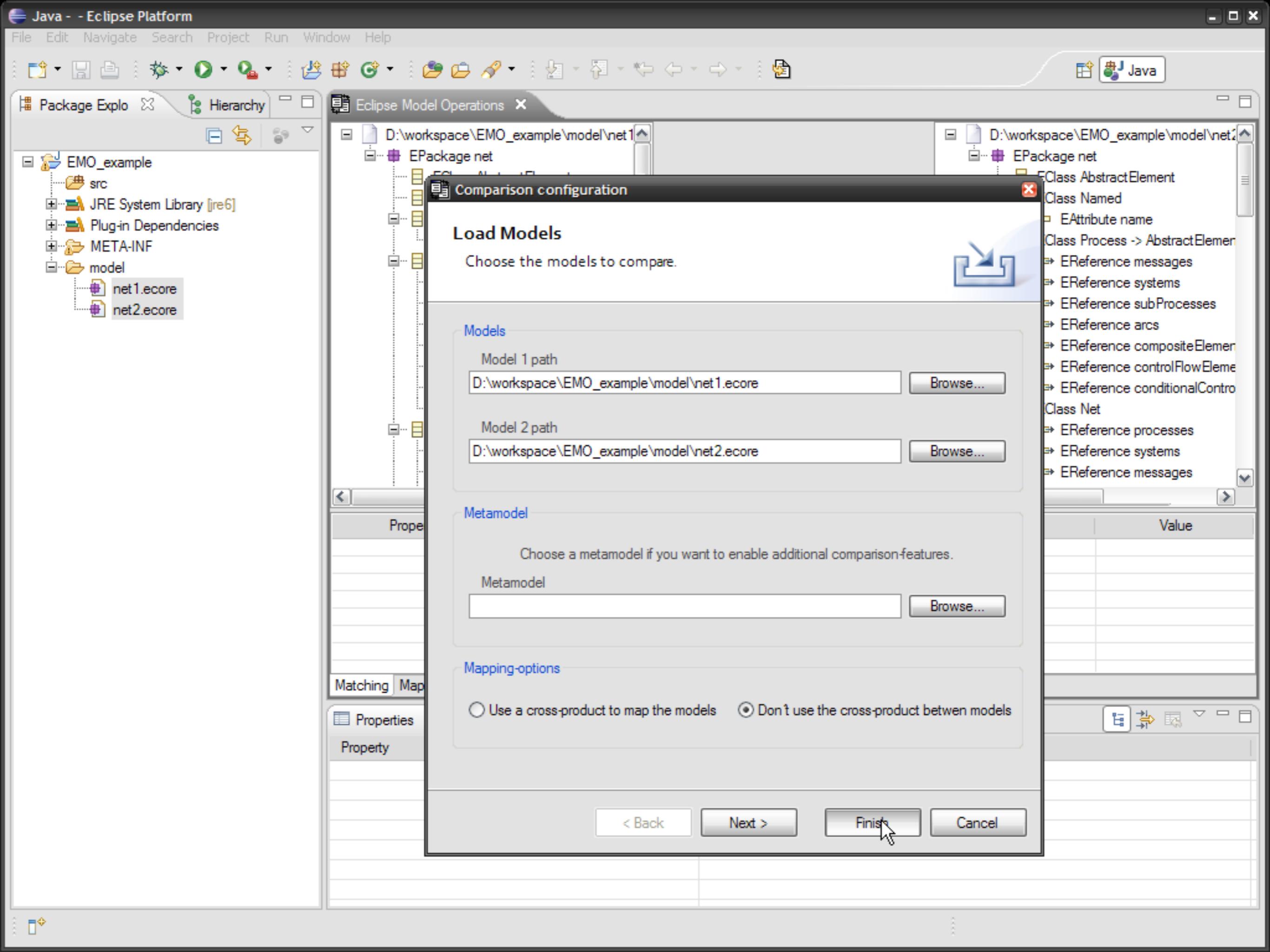
Java - - Eclipse Platform

File Edit Navigate Search Project Run Window Help

Package Explo Hierarchy

- EMO\_example
  - src
  - JRE System Library [jre6]
  - Plug-in Dependencies
  - META-INF
  - model
    - net1.ecore
    - net2.ecore

compare models



### Load Models

Choose the models to compare.

#### Models

Model 1 path

D:\workspace\EMO\_example\model\net1.ecore

Browse...

Model 2 path

D:\workspace\EMO\_example\model\net2.ecore

Browse...

#### Metamodel

Choose a metamodel if you want to enable additional comparison features.

Metamodel

Browse...

#### Mapping-options

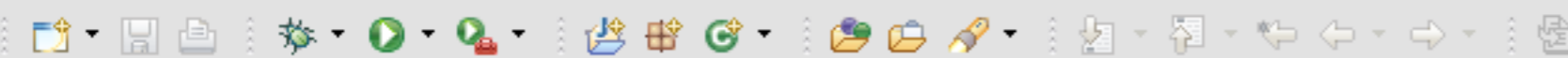
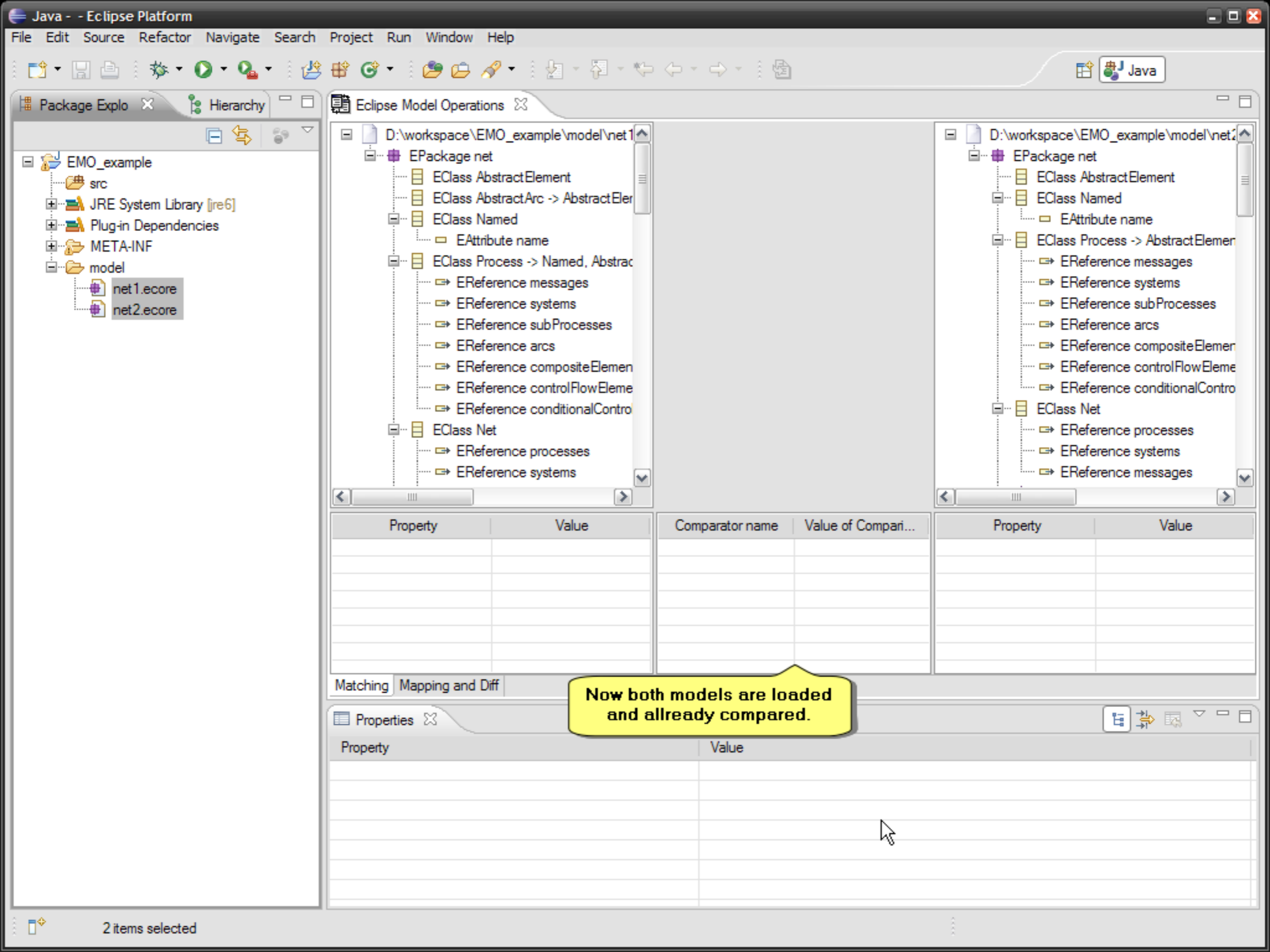
Use a cross-product to map the models  Don't use the cross-product between models

< Back

Next >

Finish

Cancel



EMO\_example

- src
- JRE System Library [jre6]
- Plug-in Dependencies
- META-INF
- model
  - net1.ecore
  - net2.ecore

D:\workspace\EMO\_example\model\net1

- EPackage net
  - EClass AbstractElement
  - EClass AbstractArc -> AbstractElement
  - EClass Named
    - EAttribute name
  - EClass Process -> Named, AbstractElement
    - EReference messages
    - EReference systems
    - EReference subProcesses
    - EReference arcs
    - EReference compositeElement
    - EReference controlFlowElement
    - EReference conditionalControl
  - EClass Net
    - EReference processes
    - EReference systems

Property	Value

D:\workspace\EMO\_example\model\net2

- EPackage net
  - EClass AbstractElement
  - EClass Named
    - EAttribute name
  - EClass Process -> AbstractElement
    - EReference messages
    - EReference systems
    - EReference subProcesses
    - EReference arcs
    - EReference compositeElement
    - EReference controlFlowElement
    - EReference conditionalControl
  - EClass Net
    - EReference processes
    - EReference systems
    - EReference messages

Comparator name	Value of Compari...

D:\workspace\EMO\_example\model\net2

- EPackage net
  - EClass AbstractElement
  - EClass Named
    - EAttribute name
  - EClass Process -> AbstractElement
    - EReference messages
    - EReference systems
    - EReference subProcesses
    - EReference arcs
    - EReference compositeElement
    - EReference controlFlowElement
    - EReference conditionalControl
  - EClass Net
    - EReference processes
    - EReference systems
    - EReference messages

Property	Value

Now both models are loaded and allready compared.

Property	Value

