

- EMO_example
 - src
 - JRE System Library [jre6]
 - Plug-in Dependencies
 - META-INF
 - model
 - net1.ecore
 - net2.ecore
 - Process1.xmi
 - Process2.xmi

Comparison configuration

Load Models

Choose the models to compare.



Models

Model 1 path

D:\workspace\EMO_example\model\Process1.xmi

Browse...

Model 2 path

D:\workspace\EMO_example\model\Process2.xmi

Browse...

Metamodel

Choose a metamodel if you want to enable additional comparison features.

Metamodel

Browse...

Mapping-options

Use a cross-product to map the models Don't use the cross-product between models

< Back

Next >

Finish

Cancel

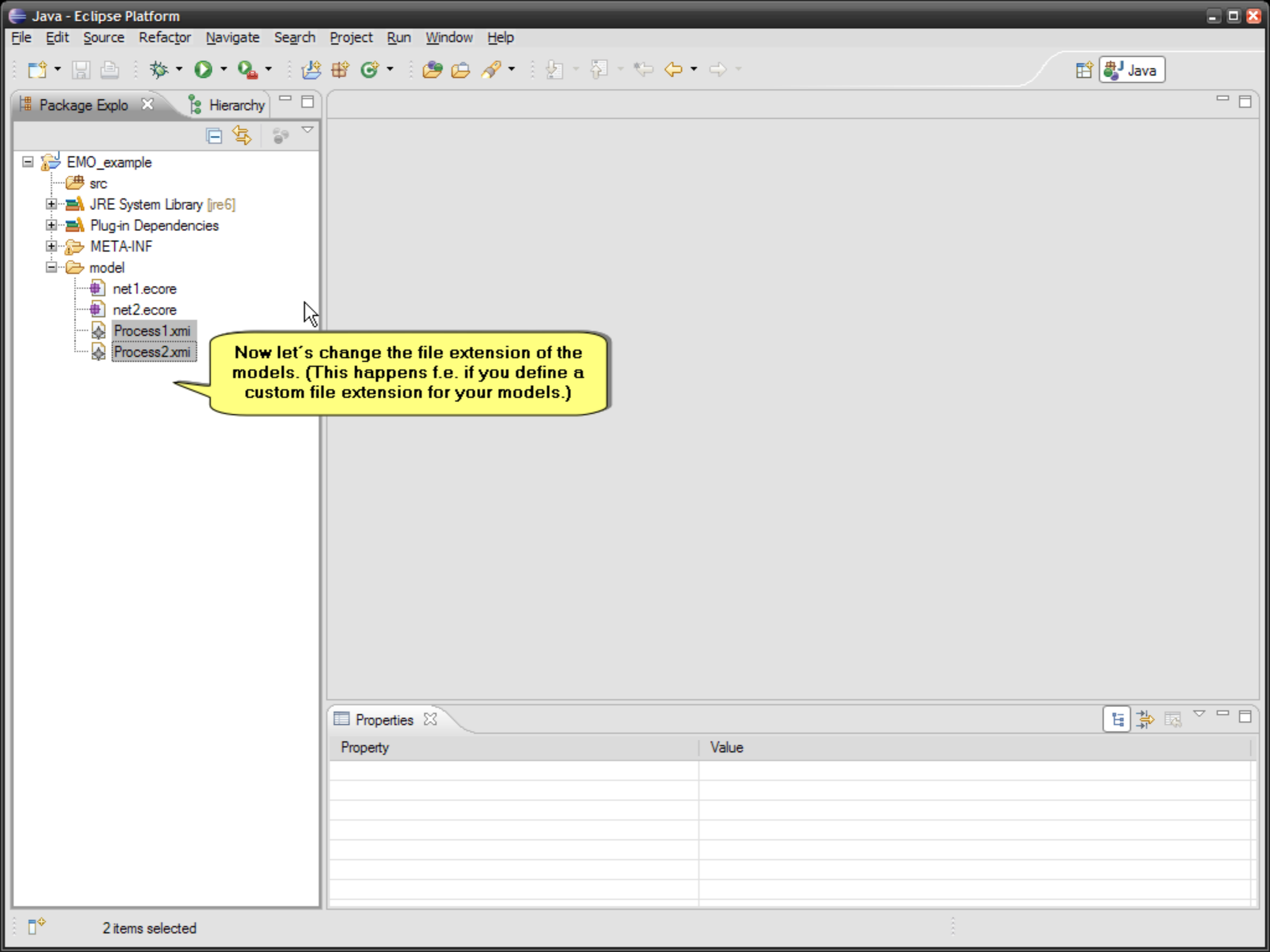
Properties

Matching Map

Properties

Property

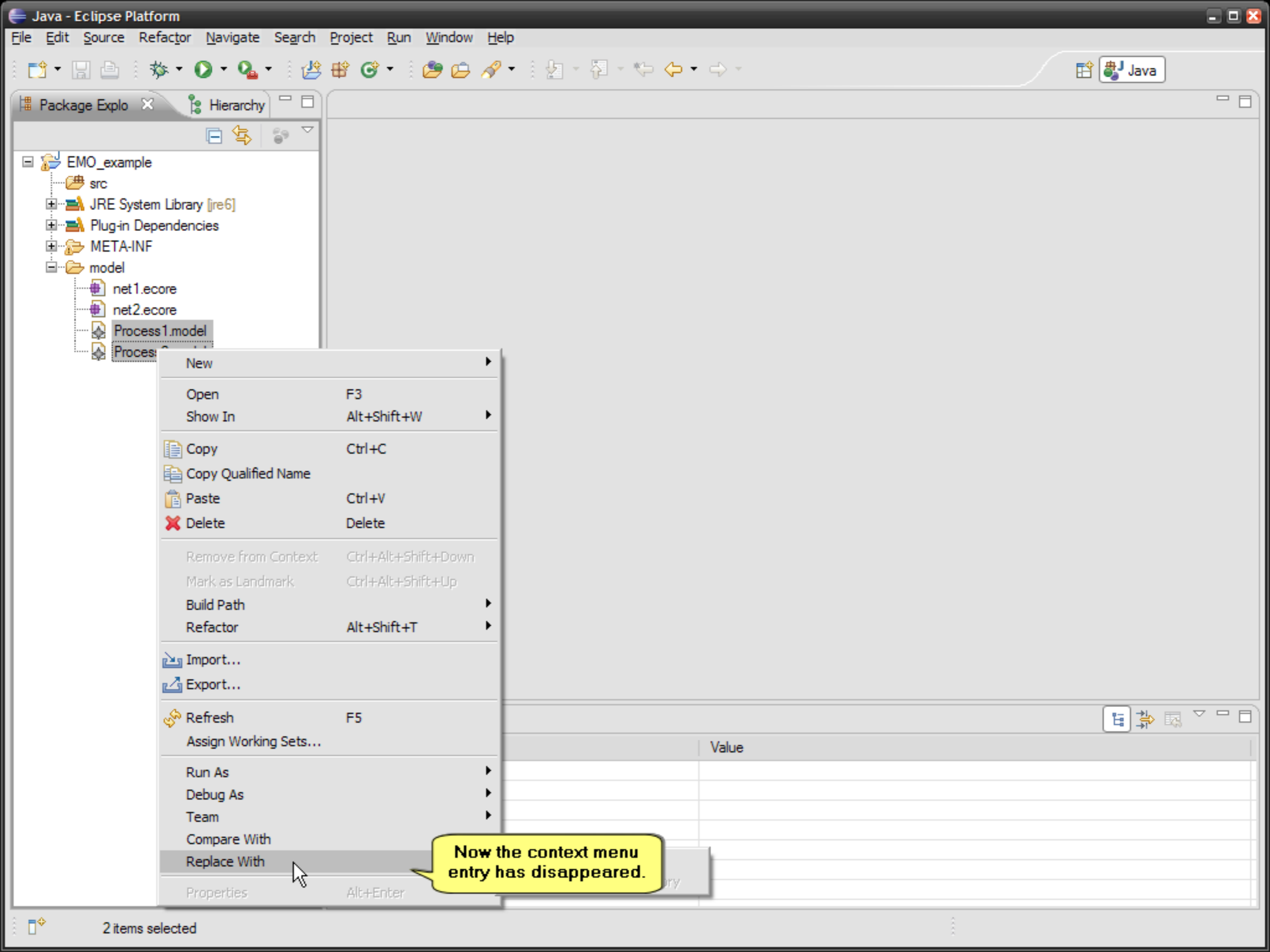
Value



Now let's change the file extension of the models. (This happens f.e. if you define a custom file extension for your models.)

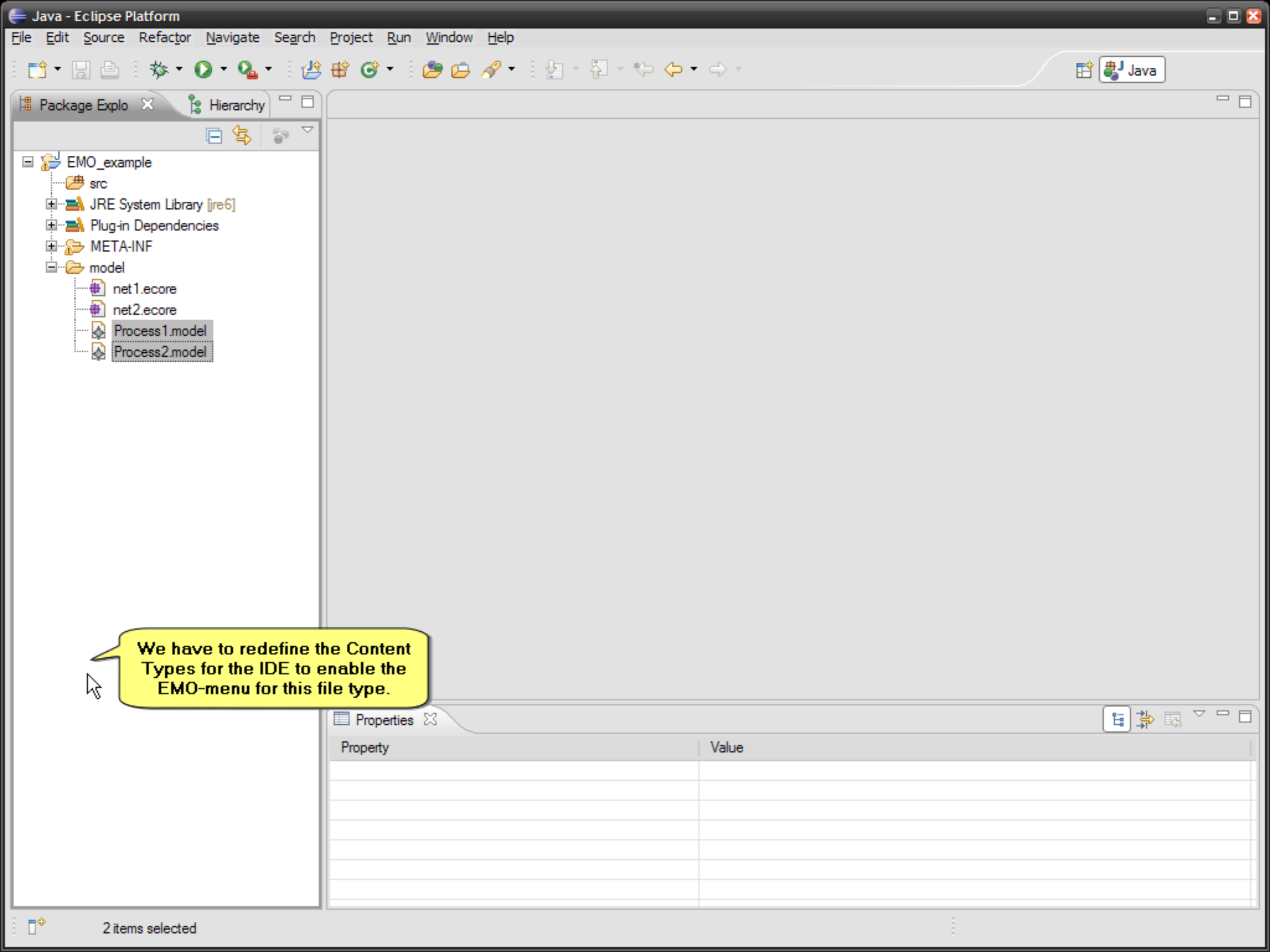
| Property | Value |
|----------|-------|
| | |
| | |
| | |
| | |
| | |
| | |
| | |
| | |
| | |
| | |

2 items selected



Now the context menu entry has disappeared.

2 items selected



We have to redefine the Content Types for the IDE to enable the EMO-menu for this file type.

| Property | Value |
|----------|-------|
| | |
| | |
| | |
| | |
| | |
| | |
| | |
| | |

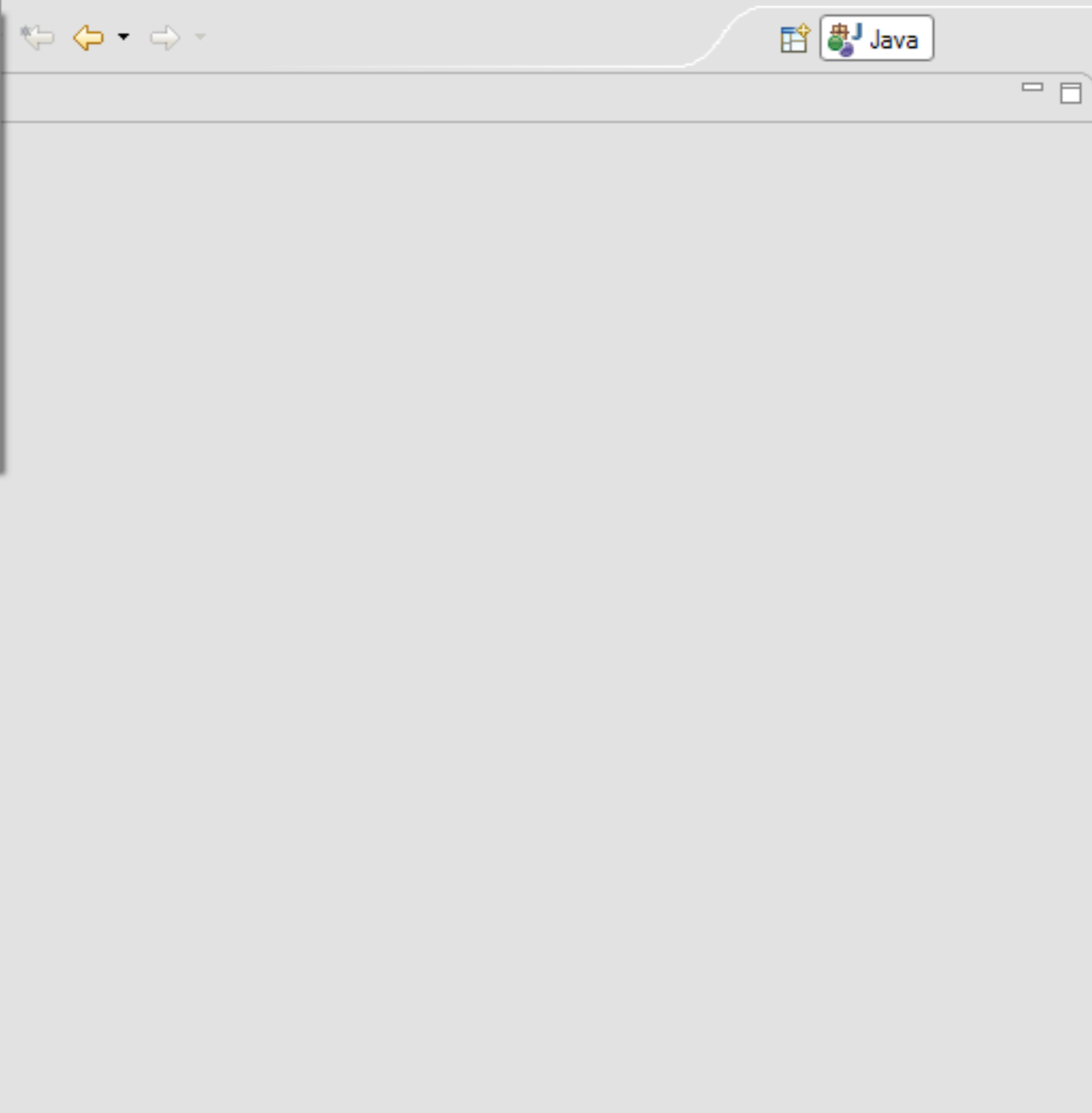
2 items selected



Package Explo Hierarchy

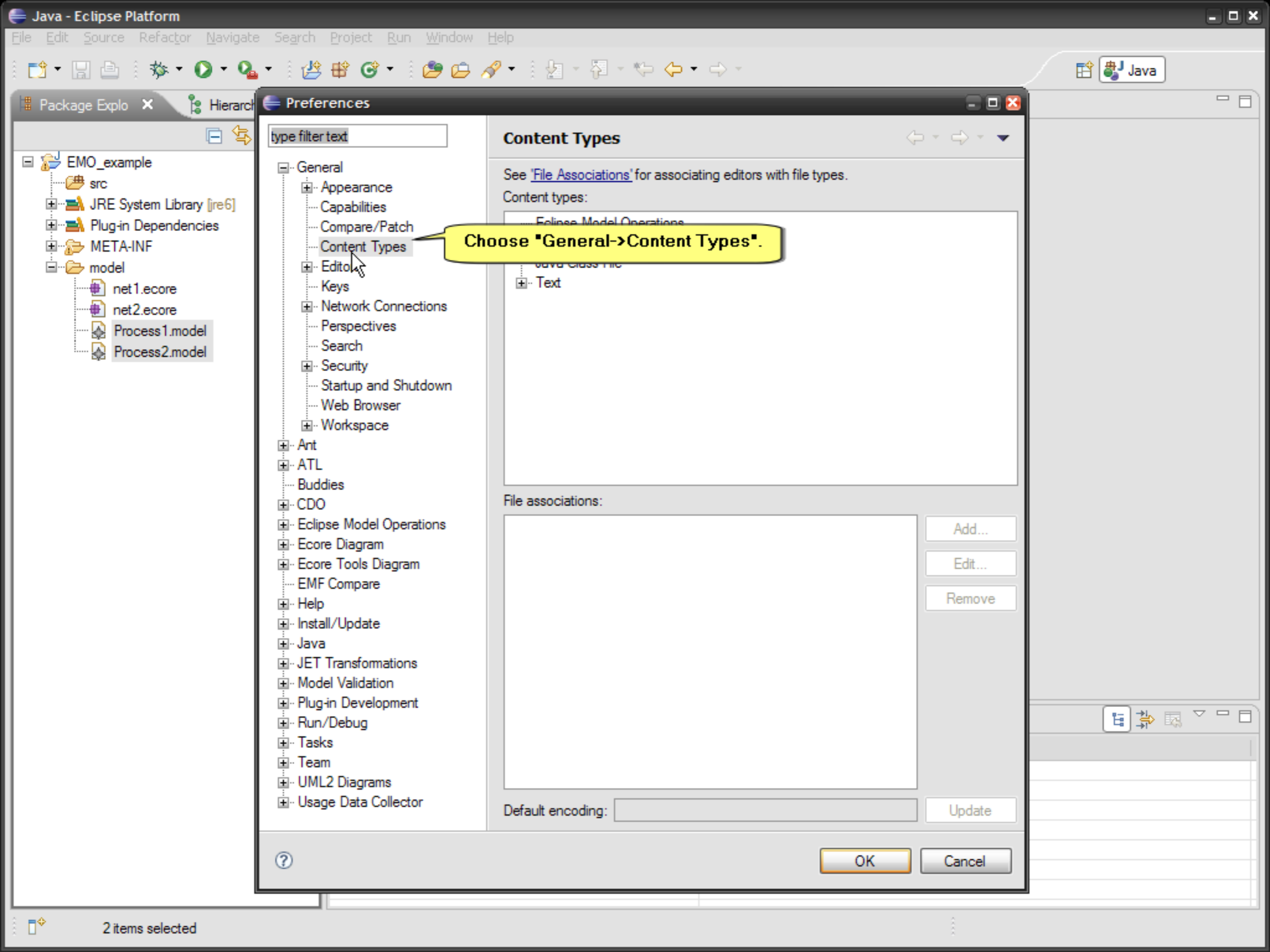
- EMO_example
 - src
 - JRE System Library [jre6]
 - Plug-in Dependencies
 - META-INF
 - model
 - net1.ecore
 - net2.ecore
 - Process1.model
 - Process2.model

- New Window
- New Editor
- Open Perspective
- Show View
- Customize Perspective...
- Save Perspective As...
- Reset Perspective...
- Close Perspective
- Close All Perspectives
- Navigation
- Preferences



Properties

| Property | Value |
|----------|-------|
| | |
| | |
| | |
| | |
| | |
| | |
| | |
| | |
| | |
| | |



Choose "General->Content Types".

type filter text

Content Types

See ['File Associations'](#) for associating editors with file types.

Content types:

- Eclipse Model Operations
- Java Class File
- Text

File associations:

-

Add...
Edit...
Remove

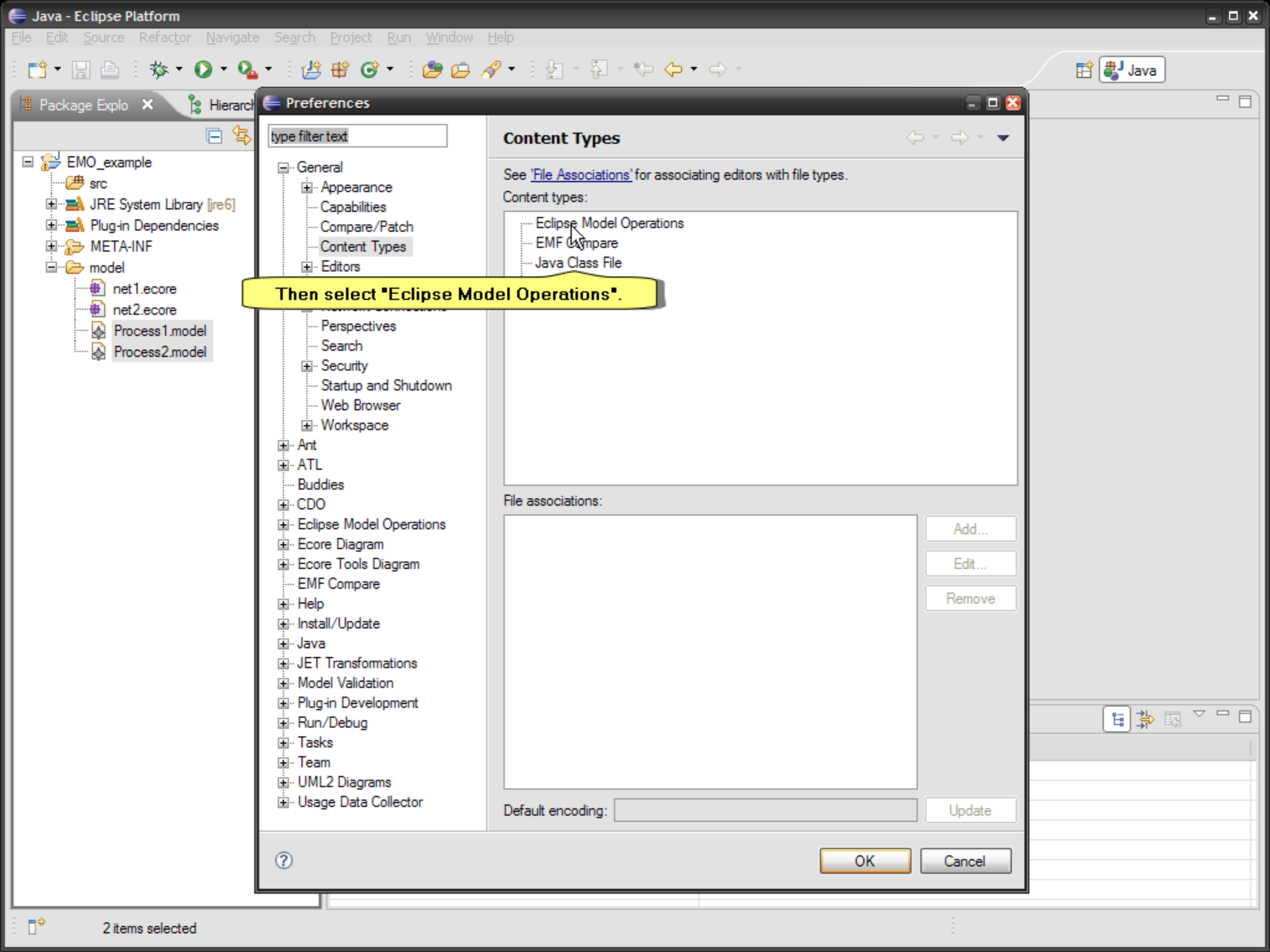
Default encoding:

Update

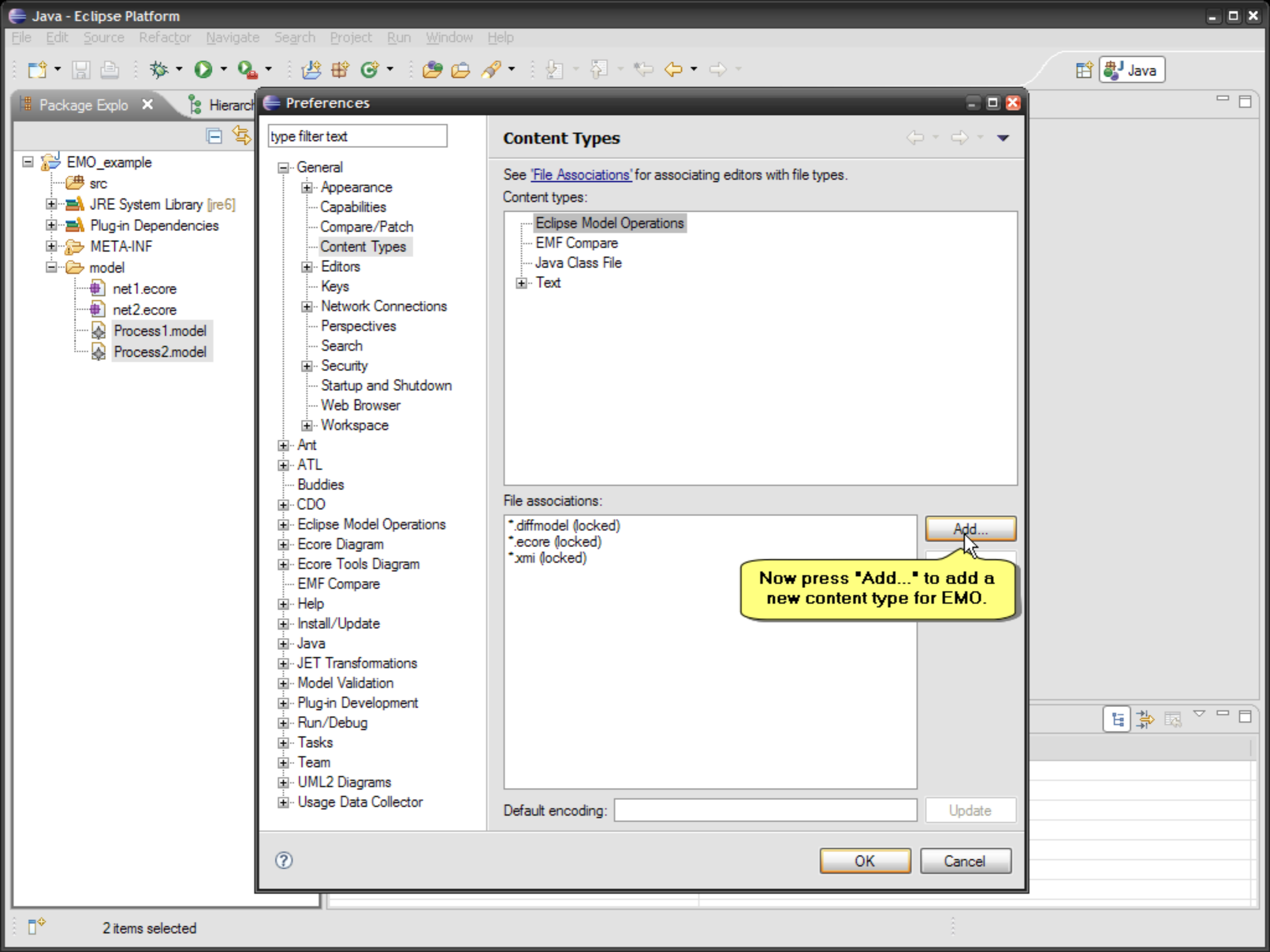
OK

Cancel





Then select "Eclipse Model Operations".



type filter text

Content Types

See ['File Associations'](#) for associating editors with file types.

Content types:

- ... Eclipse Model Operations
- ... EMF Compare
- ... Java Class File
- + Text

File associations:

- *.diffmodel (locked)
- *.ecore (locked)
- *.xmi (locked)

Add...

Now press "Add..." to add a new content type for EMO.

Default encoding:

Update

OK

Cancel

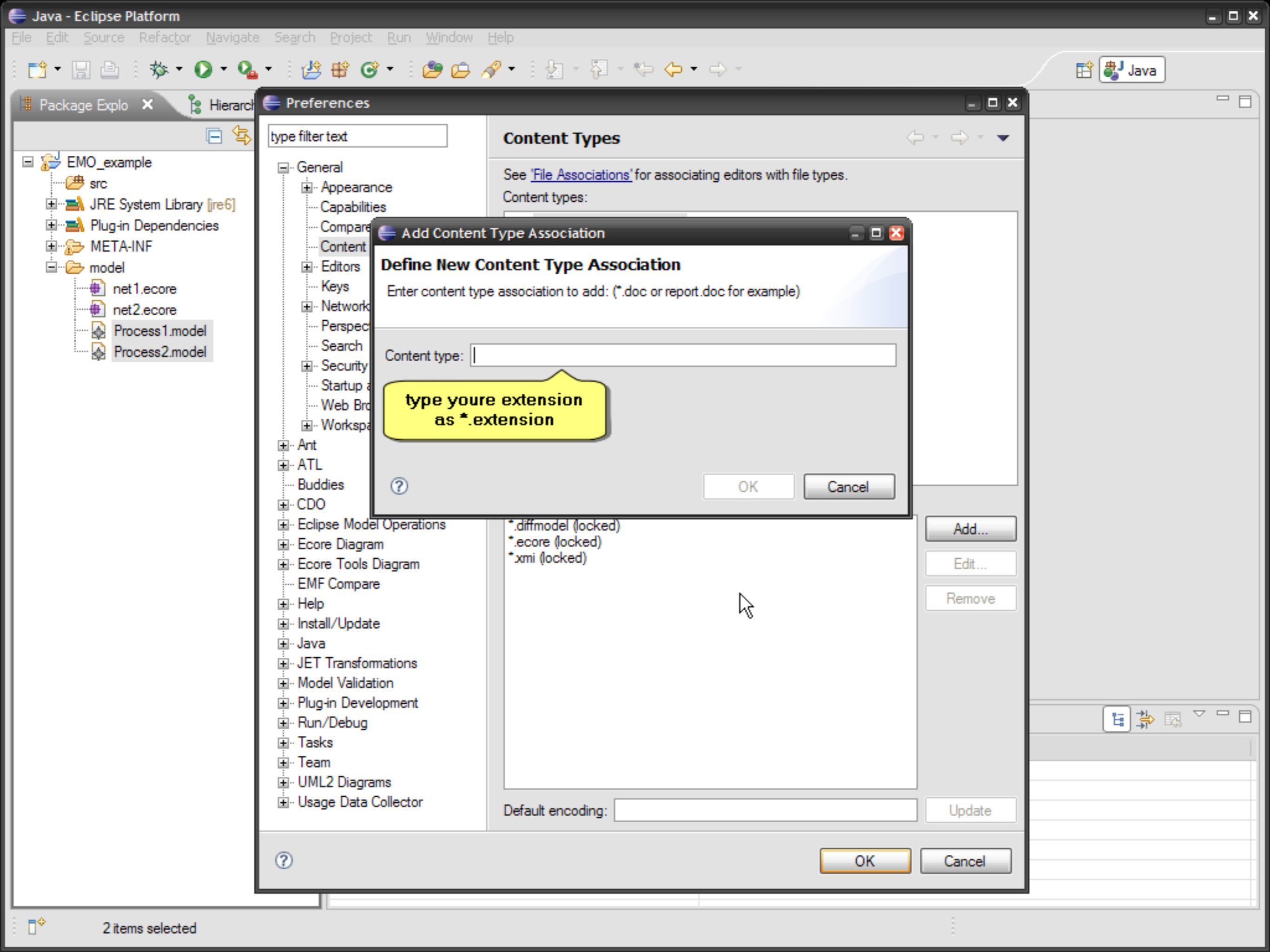
?

Package Explo x Hierarch

- EMO_example
 - src
 - JRE System Library [jre6]
 - Plug-in Dependencies
 - META-INF
 - model
 - net1.ecore
 - net2.ecore
 - Process1.model
 - Process2.model

Java

2 items selected



Add Content Type Association

Define New Content Type Association

Enter content type association to add: (*.doc or report.doc for example)

Content type:

type youre extension as *.extension

OK Cancel

Preferences

type filter text

Content Types

See 'File Associations' for associating editors with file types.

Content types:

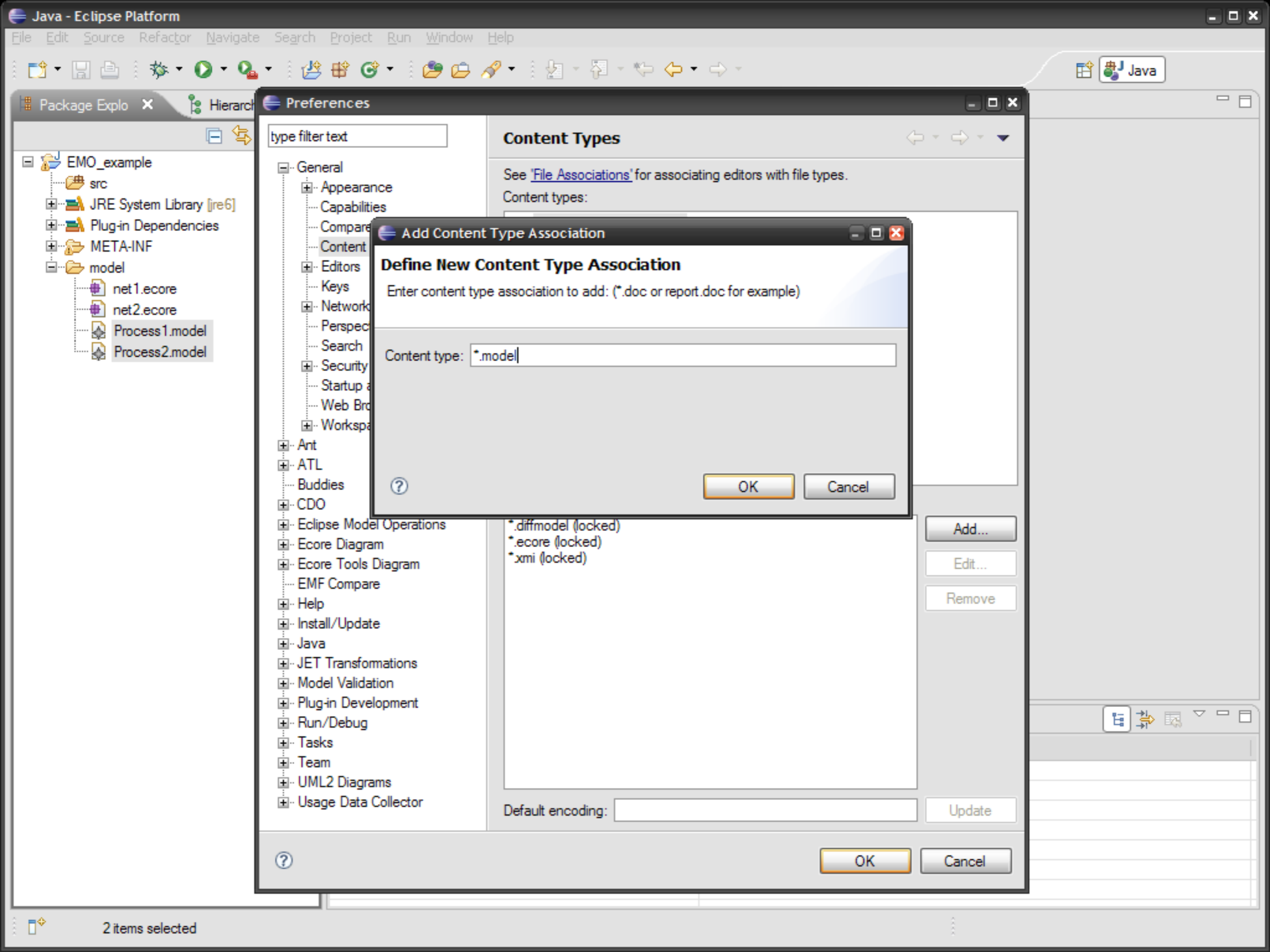
- *.diffmodel (locked)
- *.ecore (locked)
- *.xmi (locked)

Default encoding:

OK Cancel

Package Explo

- EMO_example
 - src
 - JRE System Library [jre6]
 - Plug-in Dependencies
 - META-INF
 - model
 - net1.ecore
 - net2.ecore
 - Process1.model
 - Process2.model



Add Content Type Association

Define New Content Type Association

Enter content type association to add: (*.doc or report.doc for example)

Content type: *.model

OK Cancel

type filter text

Content Types

See 'File Associations' for associating editors with file types.

Content types:

- *.diffmodel (locked)
- *.ecore (locked)
- *.xmi (locked)

Default encoding:

Update

OK Cancel

Package Explo

- EMO_example
 - src
 - JRE System Library [jre6]
 - Plug-in Dependencies
 - META-INF
 - model
 - net1.ecore
 - net2.ecore
 - Process1.model
 - Process2.model



Package Explo x Hierarch

- EMO_example
 - src
 - JRE System Library [jre6]
 - Plug-in Dependencies
 - META-INF
 - model
 - net1.ecore
 - net2.ecore
 - Process1.model
 - Process2.model

Preferences

type filter text

- General
 - Appearance
 - Capabilities
 - Compare/Patch
 - Content Types**
 - Editors
 - Keys
 - Network Connections
 - Perspectives
 - Search
 - Security
 - Startup and Shutdown
 - Web Browser
 - Workspace
- Ant
- ATL
- Buddies
- CDO
- Eclipse Model Operations
- Ecore Diagram
- Ecore Tools Diagram
- EMF Compare
- Help
- Install/Update
- Java
- JET Transformations
- Model Validation
- Plug-in Development
- Run/Debug
- Tasks
- Team
- UML2 Diagrams
- Usage Data Collector

Content Types

See ['File Associations'](#) for associating editors with file types.

Content types:

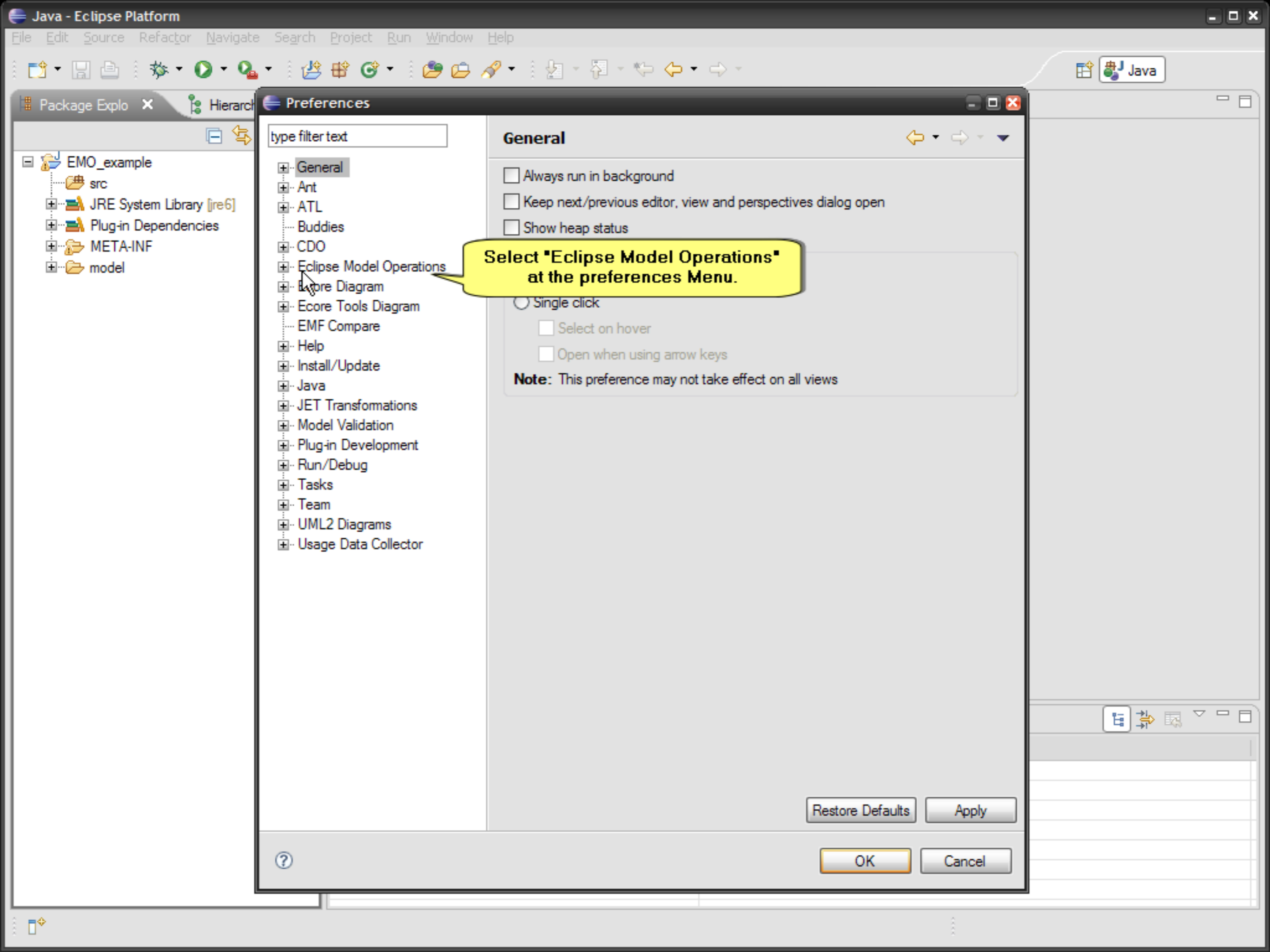
- Eclipse Model Operations
- EMF Compare
- Java Class File
- Text

File associations:

- *.model
- *.diffmodel (locked)
- *.ecore (locked)
- *.xmi (locked)

Default encoding:

Buttons: Add..., Edit..., Remove, Update, OK, Cancel



Select "Eclipse Model Operations" at the preferences Menu.

type filter text

General

- Always run in background
- Keep next/previous editor, view and perspectives dialog open
- Show heap status

- Single click
 - Select on hover
 - Open when using arrow keys

Note: This preference may not take effect on all views

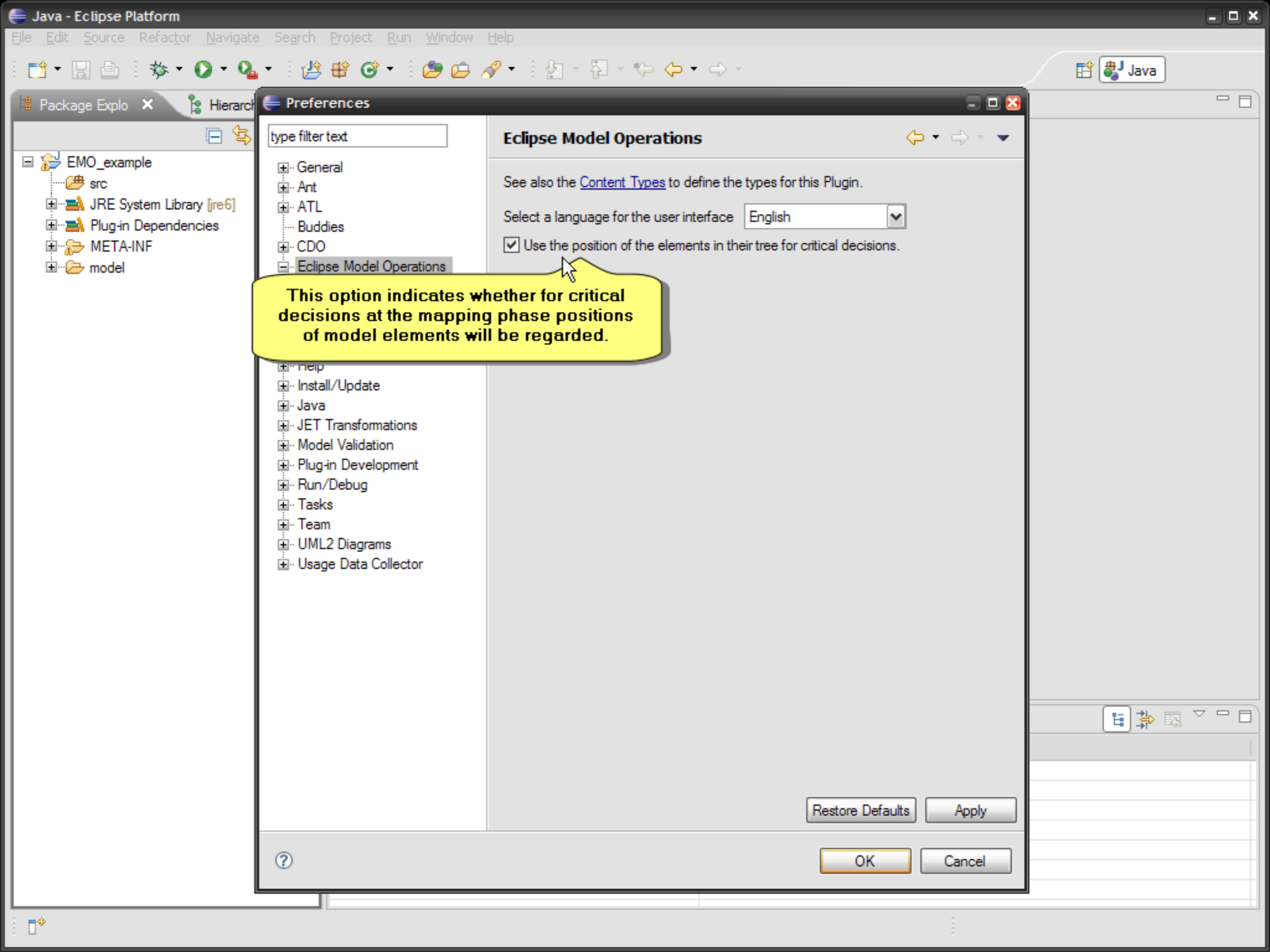
Restore Defaults

Apply

OK

Cancel





This option indicates whether for critical decisions at the mapping phase positions of model elements will be regarded.

Eclipse Model Operations

See also the [Content Types](#) to define the types for this Plugin.

Select a language for the user interface

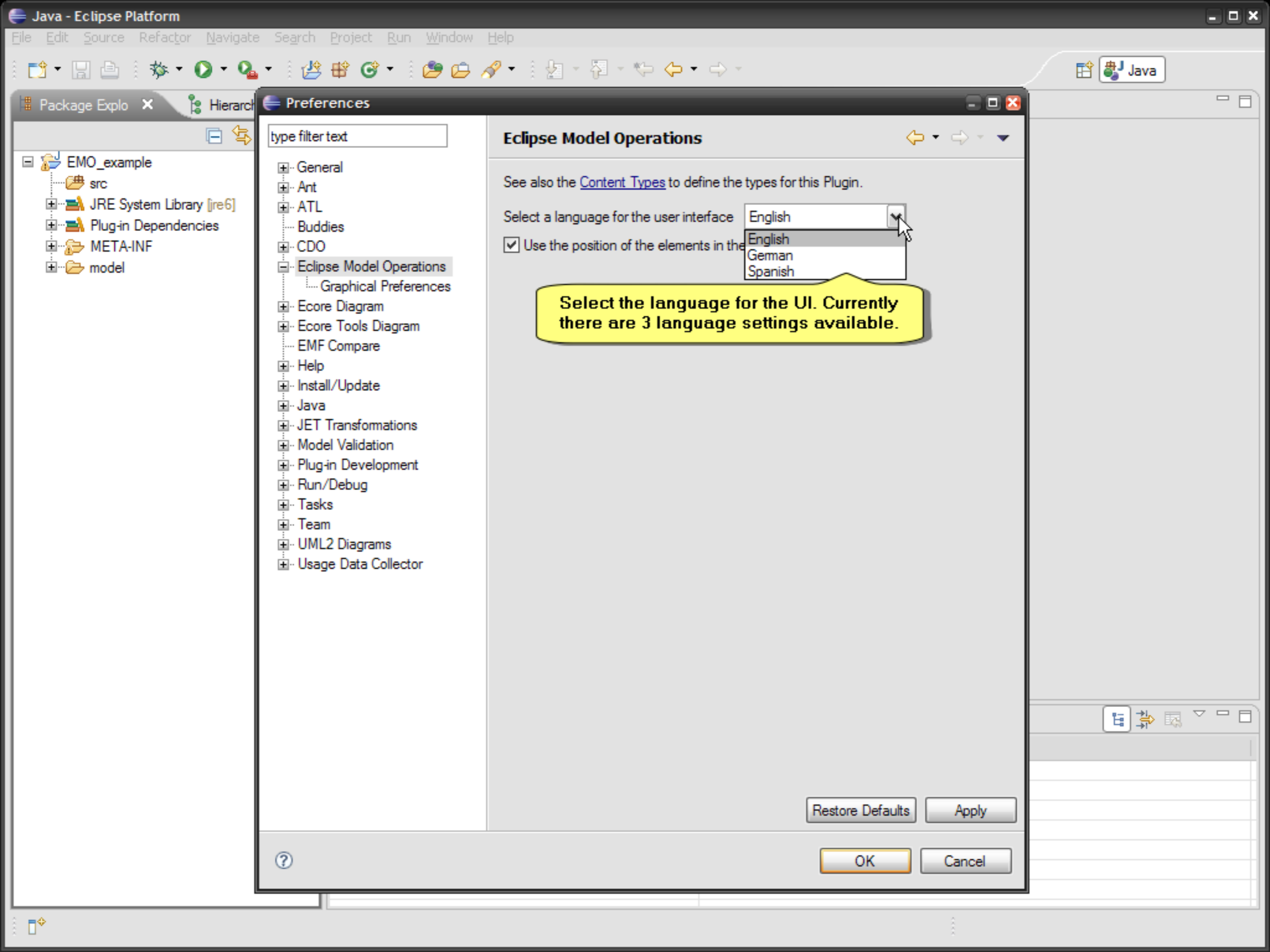
Use the position of the elements in their tree for critical decisions.

Restore Defaults

Apply

OK

Cancel



type filter text

- General
- Ant
- ATL
- Buddies
- CDO
- Eclipse Model Operations
 - Graphical Preferences
- Ecore Diagram
- Ecore Tools Diagram
- EMF Compare
- Help
- Install/Update
- Java
- JET Transformations
- Model Validation
- Plug-in Development
- Run/Debug
- Tasks
- Team
- UML2 Diagrams
- Usage Data Collector

Eclipse Model Operations

See also the [Content Types](#) to define the types for this Plugin.

Select a language for the user interface

English

English

German

Spanish

Use the position of the elements in the

Select the language for the UI. Currently there are 3 language settings available.

Restore Defaults

Apply

OK

Cancel



Package Explo x Hierarchy


- EMO_example
 - src
 - JRE System Library [jre6]
 - Plug-in Dependencies
 - META-INF
 - model

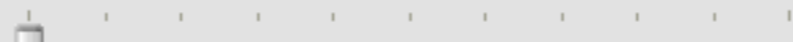
type filter text

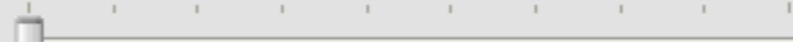
- General
- Ant
- ATL
- Buddies
- CDO
- Eclipse Model Operations
 - Graphical Preferences
- Ecore Diagram
- Ecore Tools Diagram
- EMF Compare
- Help
- Install/Update
- Java
- JET Transformations
- Model Validation
- Plug-in Development
- Run/Debug
- Tasks
- Team
- UML2 Diagrams
- Usage Data Collector

Graphical Preferences

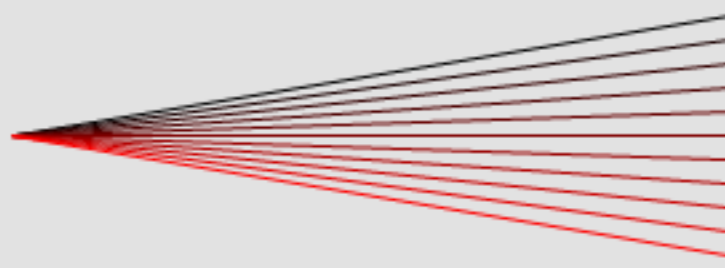
Settings

Line color 

Threshold 

Color gradations 

Preview



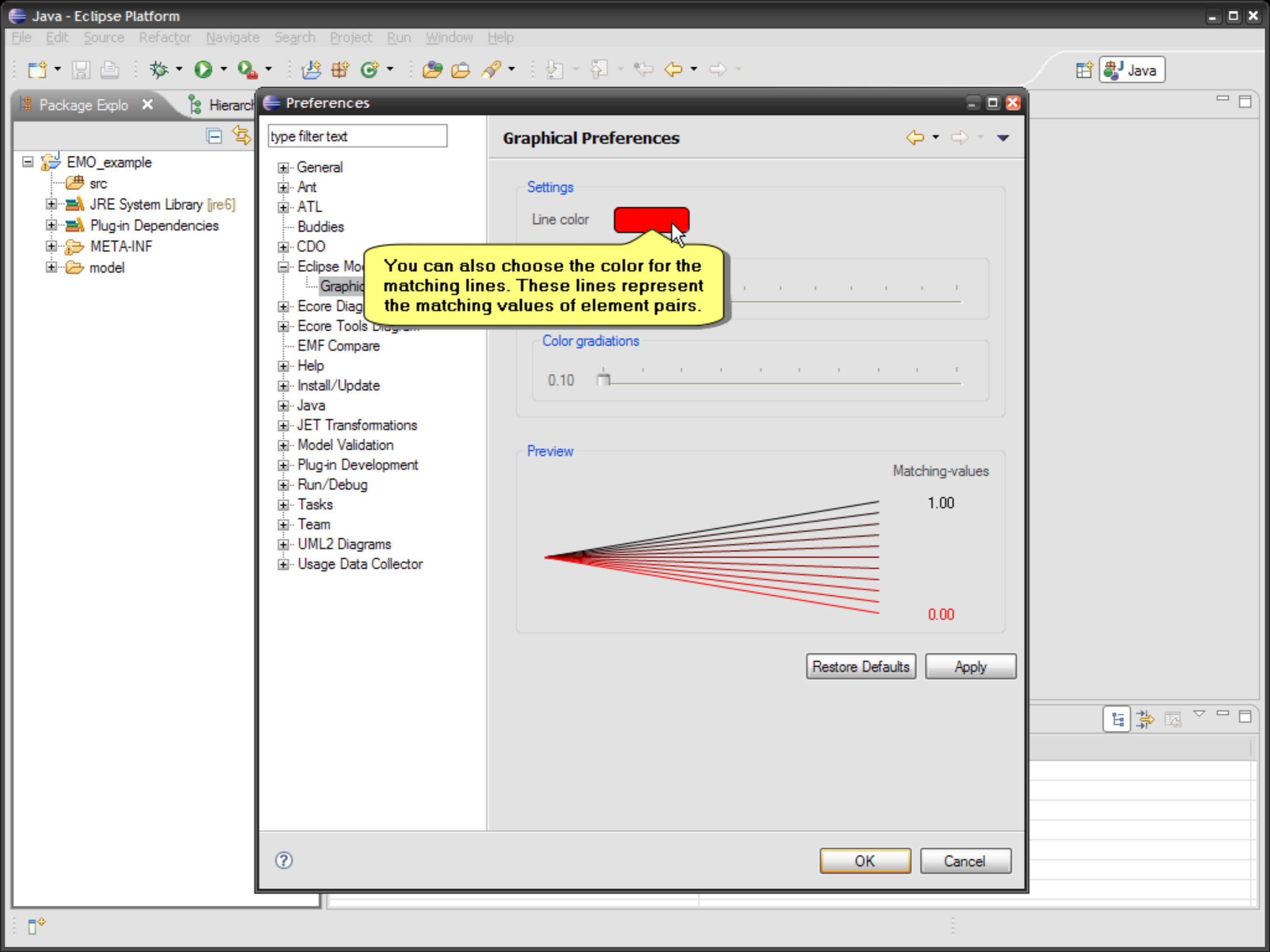
Matching-values

1.00

0.00

Restore Defaults Apply

OK Cancel



You can also choose the color for the matching lines. These lines represent the matching values of element pairs.

Graphical Preferences

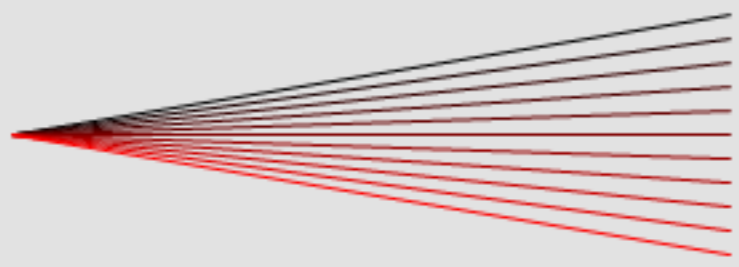
Settings

Line color [Color Selection]

Color gradations

0.10

Preview



Matching-values

1.00

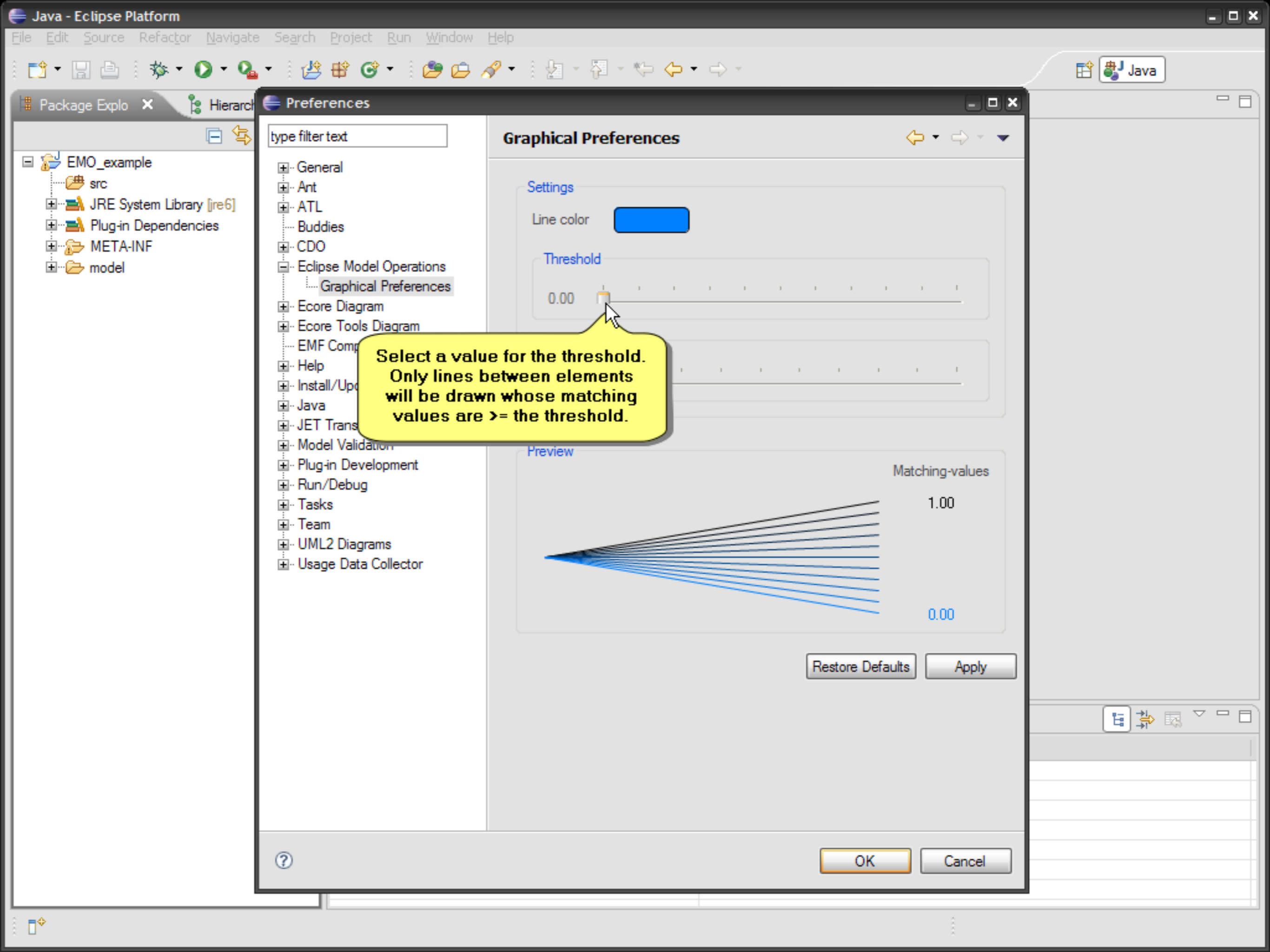
0.00

Restore Defaults

Apply

OK

Cancel



Select a value for the threshold.
Only lines between elements
will be drawn whose matching
values are >= the threshold.

Graphical Preferences

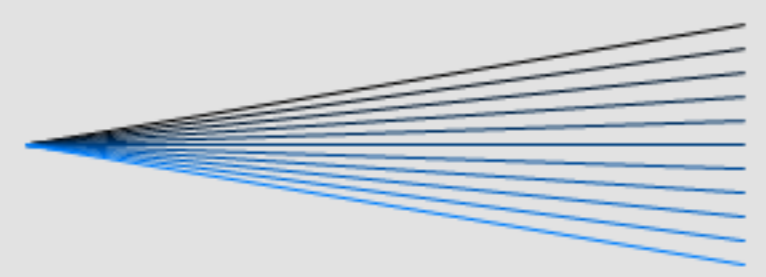
Settings

Line color

Threshold

0.00

Preview



Matching-values

1.00

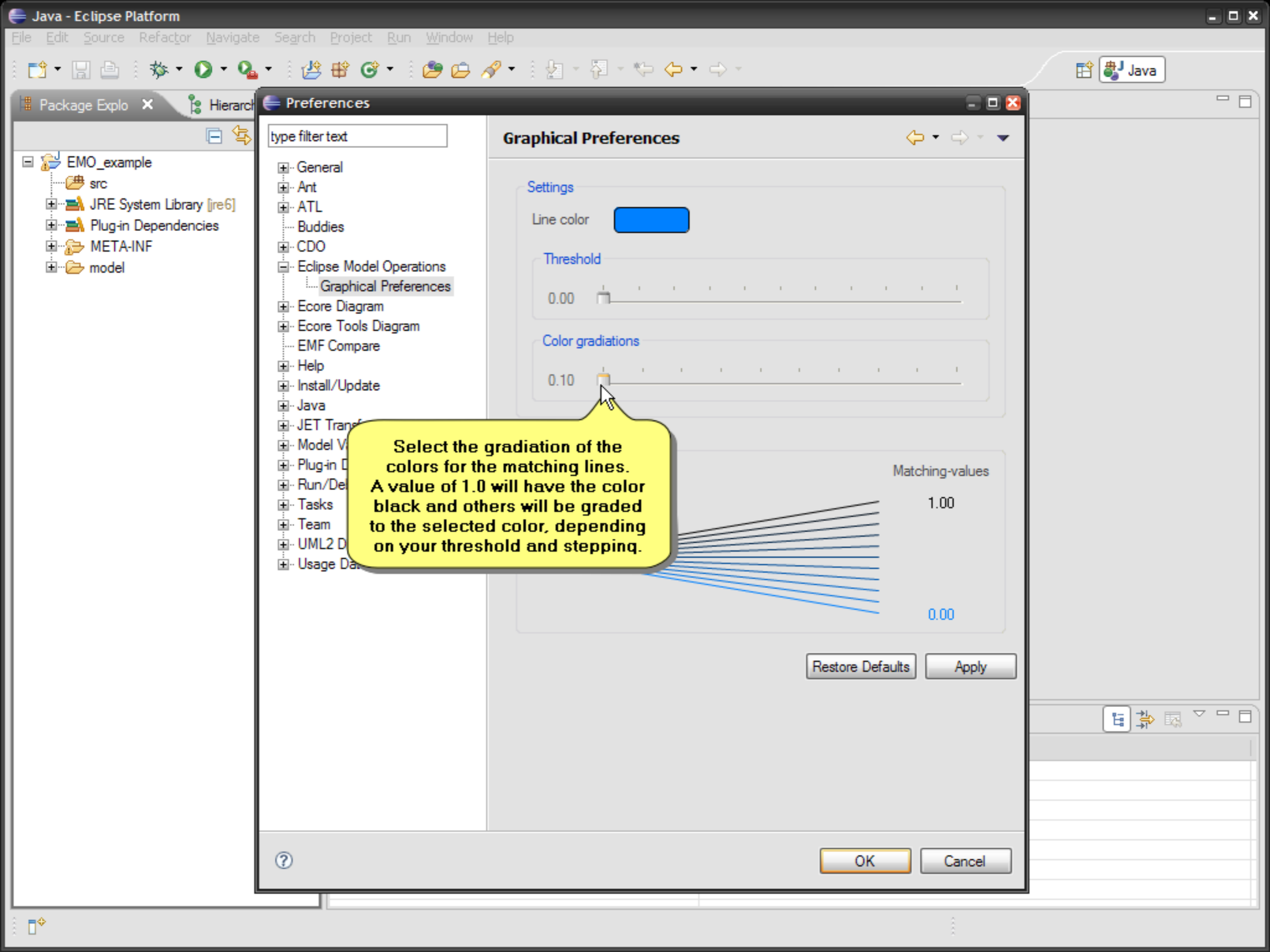
0.00

Restore Defaults

Apply

OK

Cancel



- type filter text
- General
- Ant
- ATL
- Buddies
- CDO
- Eclipse Model Operations
 - Graphical Preferences
- Ecore Diagram
- Ecore Tools Diagram
- EMF Compare
- Help
- Install/Update
- Java
- JET Transf
- Model V
- Plug-in D
- Run/De
- Tasks
- Team
- UML2 D
- Usage Da

Graphical Preferences

Settings

Line color

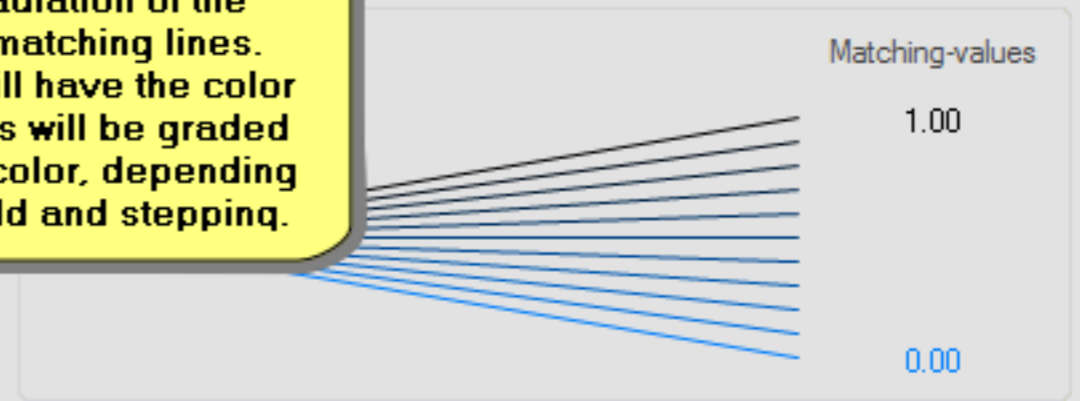
Threshold

0.00

Color gradiations

0.10

Select the gradiation of the colors for the matching lines. A value of 1.0 will have the color black and others will be graded to the selected color, depending on your threshold and stepping.



Restore Defaults Apply

OK Cancel



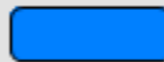
Package Explo x Hierarchy

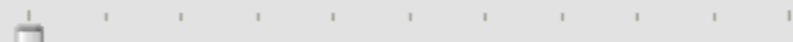
- EMO_example
 - src
 - JRE System Library [jre6]
 - Plug-in Dependencies
 - META-INF
 - model

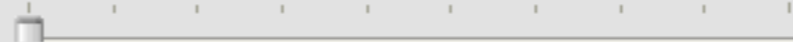
- type filter text
- General
 - Ant
 - ATL
 - Buddies
 - CDO
 - Eclipse Model Operations
 - Graphical Preferences
 - Ecore Diagram
 - Ecore Tools Diagram
 - EMF Compare
 - Help
 - Install/Update
 - Java
 - JET Transformations
 - Model Validation
 - Plug-in Development
 - Run/Debug
 - Tasks
 - Team
 - UML2 Diagrams
 - Usage Data Collector

Graphical Preferences

Settings

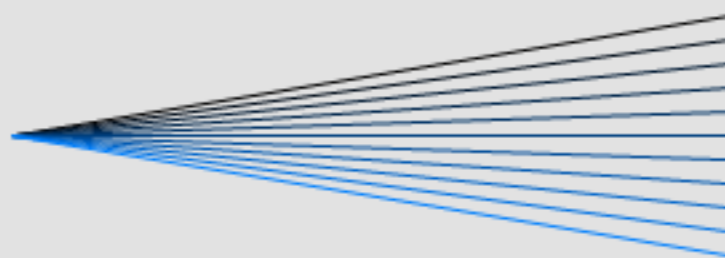
Line color 

Threshold
 0.00 

Color gradations
 0.10 

Preview

Matching-values



1.00

0.00

Restore Defaults Apply

? OK Cancel

